

APP CRS	Rwy Idg	3851
021°	TDZE	2183
	Apt Elev	2183

RNAV (GPS) RWY 2

WILBUR (2S8)

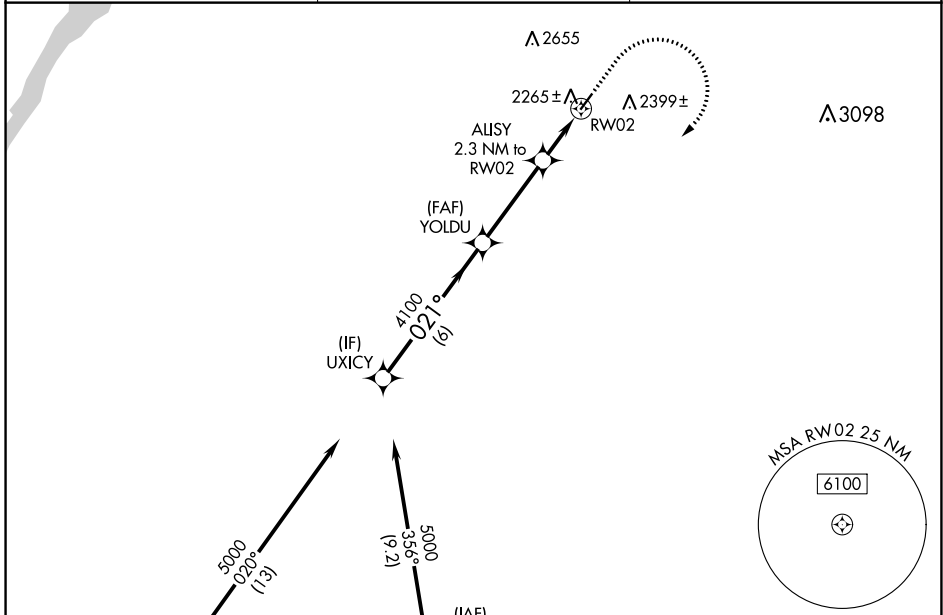
RNP APCH - GPS.

▼ Circling Rwy 20 NA at night. When local altimeter setting not received, use EPH altimeter setting and increase all MDAs 240 feet and LNAV visibility Cat C/D 5/8 SM, and Circling visibility Cat B/C/D 3/4 SM. VDP NA with EPH altimeter setting.

▲ NA

MISSED APPROACH: Climb to 2600, then climbing right turn to 5000 direct WIPES and hold.

AWOS-2 124.175	GRANT COUNTY APP CON * 126.4 379.95	CTAF 122.9 0
--------------------------	---	------------------------



NW-1, 28 NOV 2024 to 26 DEC 2024

NW-1, 28 NOV 2024 to 26 DEC 2024

ELEV 2183	TDZE 2183
-----------	-----------

REIL Rwy 2
MIRL Rwy 2-20 0

UXICY	YOLDU	ALISY 2.3 NM to RW02	2600	5000	WIPES
5000	4100	2940	↑	↷	△
6 NM		3.6 NM	1.3 NM	1 NM	
CATEGORY	A	B	C	D	
LNAV MDA	2520-1 337 (400-1)				
CIRCLING	2660-1 477 (500-1)	2760-1 577 (600-1)	2960-2¼ 777 (800-2¼)	2960-2½ 777 (800-2½)	