

WAAS CH <b>65742</b> <b>W10A</b>	APP CRS <b>124°</b>	Rwy Idg TDZE Apt Elev	<b>5728</b> <b>5932</b> <b>5933</b>
----------------------------------------	------------------------	-----------------------------	-------------------------------------------

# RNAV (GPS) RWY 10

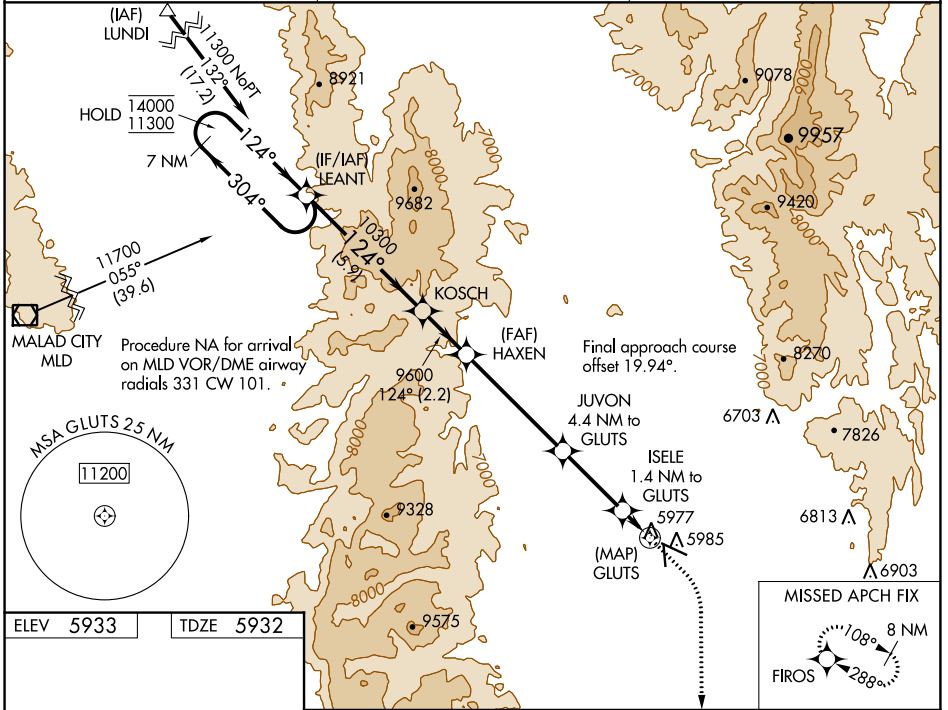
BEAR LAKE COUNTY (1U7)

RNP APCH - GPS.

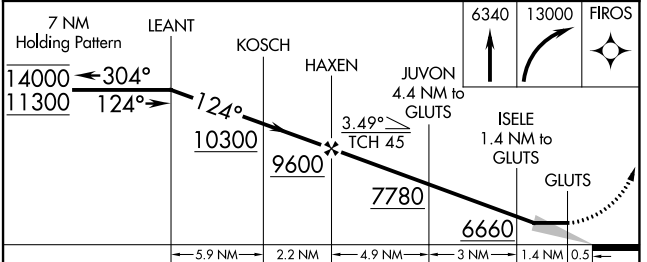
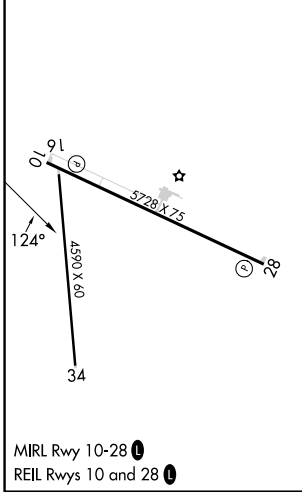
**MISSED APPROACH:** (Do not exceed 185K until FIROs)  
Climb to 6340 then climbing right turn to 13000 direct FIROs and hold, continue climb-in-hold to 13000.

**-23°C**

AWOS-3 <b>118.525</b>	SALT LAKE CENTER <b>128.35 239.25</b>	UNICOM <b>122.8 (CTAF)</b>
--------------------------	------------------------------------------	-------------------------------



ELEV 5933	TDZE 5932
-----------	-----------



CATEGORY	A	B	C	D
LP MDA	6240-1 308 (400-1)			
LNAV MDA	6240-1 308 (400-1)			
<b>C</b> CIRCLING	6320-1 387 (400-1)	6440-1 507 (600-1)	6720-2¼ 787 (800-2¼)	7140-3 1207 (1300-3)

NW-1, 28 NOV 2024 to 26 DEC 2024

NW-1, 28 NOV 2024 to 26 DEC 2024