

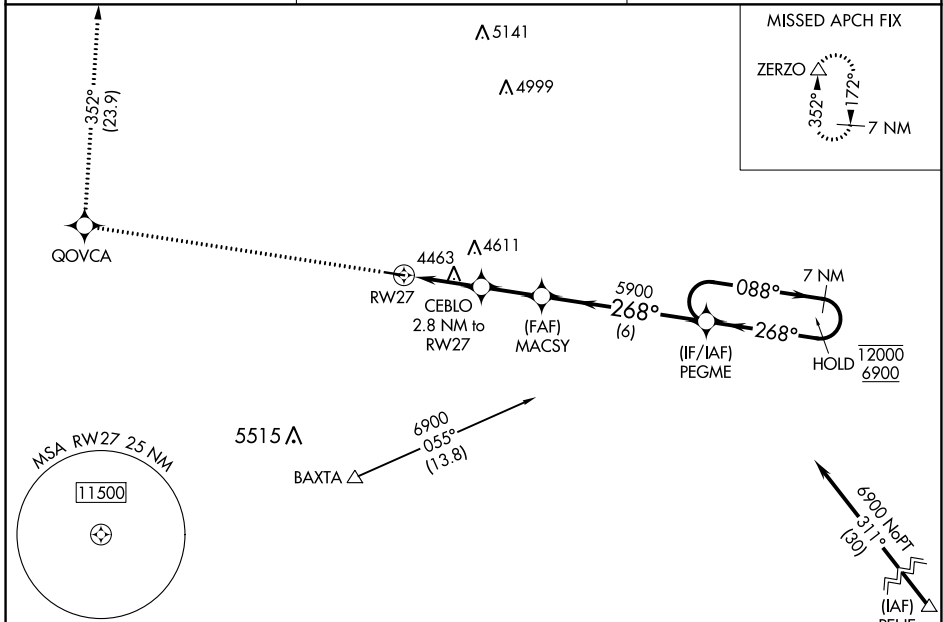
WAAS CH 62943 W 27A	APP CRS 268°	Rwy Idg 4200 TDZE 4295 Apt Elev 4312
---	------------------------	---

RNAV (GPS) RWY 27

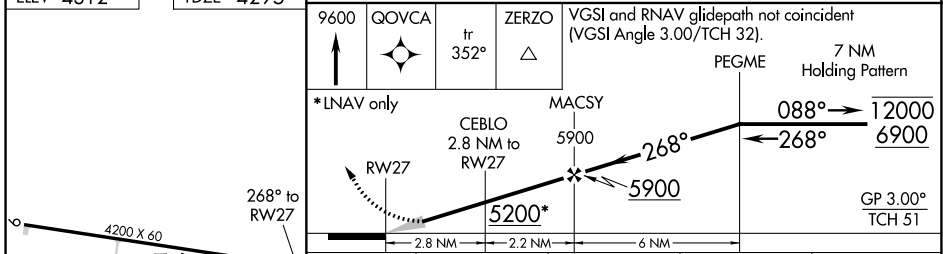
WHEATLAND COUNTY AT HARLOWTON (HWQ)

RNP APCH.	MISSED APPROACH: Climb to 9600 direct QOVCA and on track 352° to ZERZO and hold. # Missed approach requires minimum climb of 220 feet per NM to 9200.
NA Circling Rwy 9 NA at night. Baro-VNAV NA. Use Lewistown altimeter setting.	

LWT ASOS 118.375	SALT LAKE CENTER 127.75 351.9	CTAF 122.9 0
----------------------------	---	------------------------



ELEV 4312	TDZE 4295
-----------	-----------



CATEGORY	A	B	C	D
LPV DA#	4606-1	311 (300-1)		NA
LPV DA	4950-1 $\frac{7}{8}$	655 (700-1 $\frac{7}{8}$)		NA
LNAV/VNAV DA	4999-2	704 (700-2)		NA
LNAV MDA	5140-1 845 (900-1)	5140-1 $\frac{1}{4}$ 845 (900-1 $\frac{1}{4}$)		NA
CIRCLING	5140-1 $\frac{1}{4}$	828 (900-1 $\frac{1}{4}$)		NA

NW-1, 28 NOV 2024 to 26 DEC 2024

NW-1, 28 NOV 2024 to 26 DEC 2024