

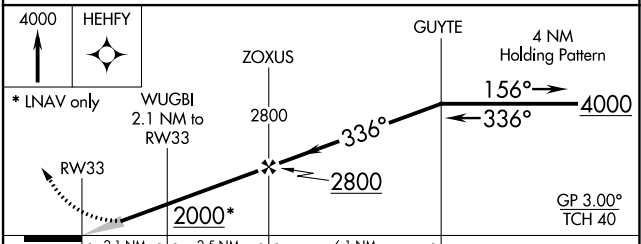
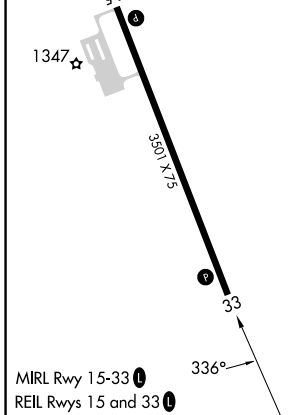
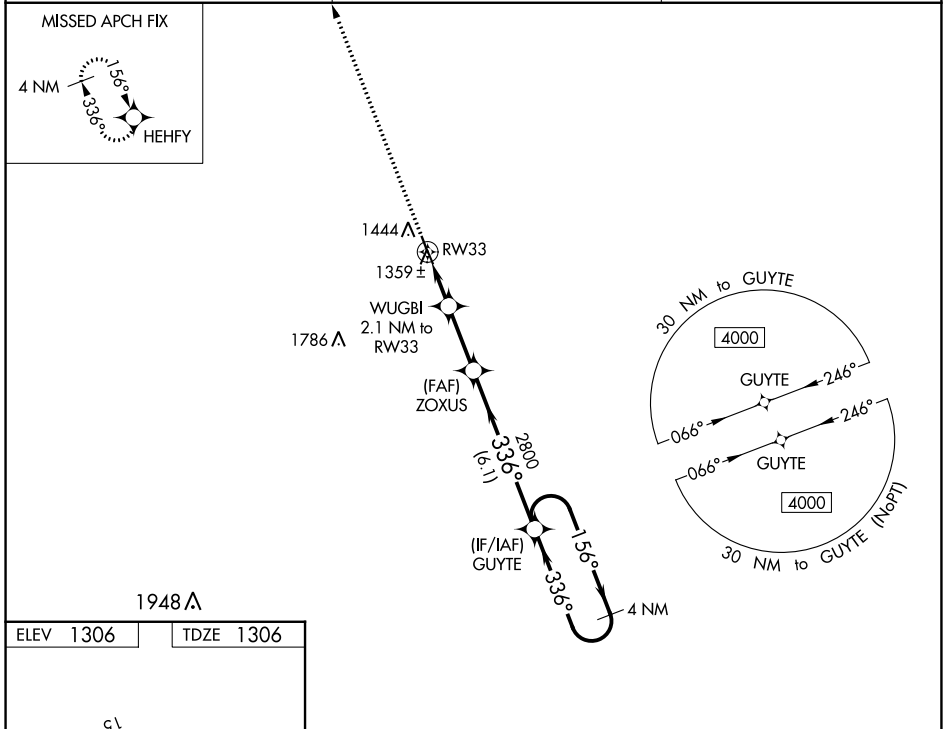
WAAS CH <b>63032</b> <b>W33A</b>	APP CRS <b>336°</b>	Rwy Idg TDZE Apt Elev	<b>3501</b> <b>1306</b> <b>1306</b>
--	------------------------	-----------------------------	---

# RNAV (GPS) RWY 33

TECUMSEH MUNI (ØG3)

RNP APCH.	<p>Baro-VNAV NA. Use Nebraska City altimeter setting, when not received, use Beatrice altimeter setting and increase all DA 3 feet and all MDA 20 feet.</p> <p>MISSED APPROACH: Climb to 4000 direct HEHFY and hold.</p>
<p>▼ Baro-VNAV NA. Use Nebraska City altimeter setting, when not received, use Beatrice altimeter setting and increase all DA 3 feet and all MDA 20 feet.</p> <p>▲ NA</p>	

AFK AWOS-3PT <b>128.325</b>	MINNEAPOLIS CENTER <b>126.4 317.7</b>	CTAF <b>122.9</b> <b>Ø</b>
--------------------------------	--	-------------------------------



CATEGORY	A	B	C	D
LPV DA	1569-1	263 (300-1)		NA
LNAV/VNAV DA	1619-1	313 (400-1)		NA
LNAV MDA	1680-1	374 (400-1)		NA

NC-2, 28 NOV 2024 to 26 DEC 2024

NC-2, 28 NOV 2024 to 26 DEC 2024