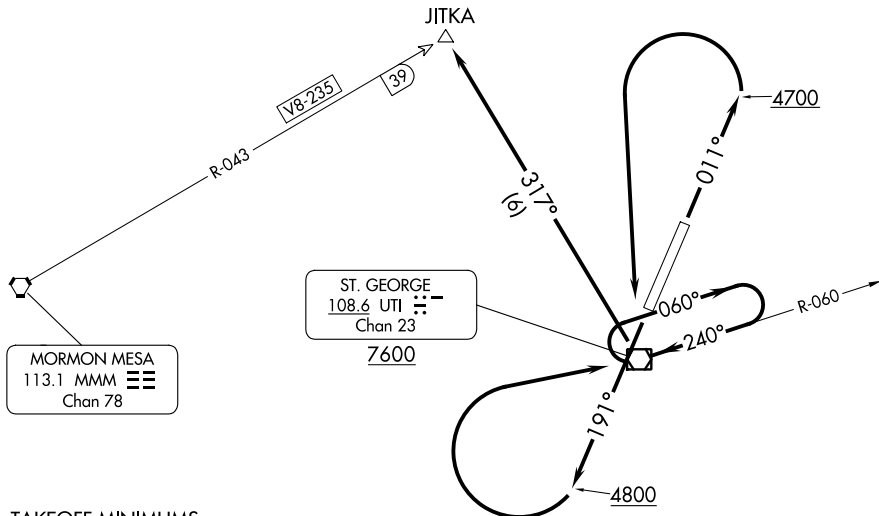


LOS ANGELES CENTER
124.2 343.6
AWOS-3
135.075



TAKEOFF MINIMUMS

Rwy 1: Obtain ATC approval for VCOA when requesting IFR clearance.
Standard with minimum climb of 330' per NM to 5400 or
6300-3 for climb in visual conditions.

Rwy 19: Obtain ATC approval for VCOA when requesting IFR clearance.
Standard with minimum climb of 380' per NM to 6100 or
6300-3 for climb in visual conditions.

TAKEOFF OBSTACLE NOTES

Rwy 1: Terrain beginning 2.2 NM from DER, 3898' right of centerline, up to 3490' MSL.
Rwy 19: Terrain 509' from DER, 44' left of centerline, 2845' MSL.
Terrain beginning 182' from DER, 64' right of centerline, up to 2856' MSL.

NOTE: Chart not to scale.

DEPARTURE ROUTE DESCRIPTION

TAKEOFF RUNWAY 1: Climb heading 011° to 4700, then climbing left turn direct UTI VOR/DME, thence. . . or, climb in visual conditions to cross St George Rgnl Airport at or above 9000, then proceed on course.

TAKEOFF RUNWAY 19: Climb heading 191° to 4800, then climbing right turn direct UTI VOR/DME, thence. . . or, climb in visual conditions to cross St George Rgnl Airport at or above 9000, then proceed on course.

. . . continue climb in UTI VOR/DME holding pattern, to cross UTI VOR/DME at or above 7600, then on UTI VOR/DME R-317 to JTKA INT/MMM VORTAC 39 DME, then proceed on course.