

|  |                        |   |
|--|------------------------|---|
| WAAS<br>CH <b>69415</b><br><b>W01A</b> | APP CRS<br><b>013°</b> | Rwy Idg <b>8000</b><br>TDZE <b>63</b><br>Apt Elev <b>75</b> |
|--|------------------------|---|

# RNAV (GPS) RWY 1R

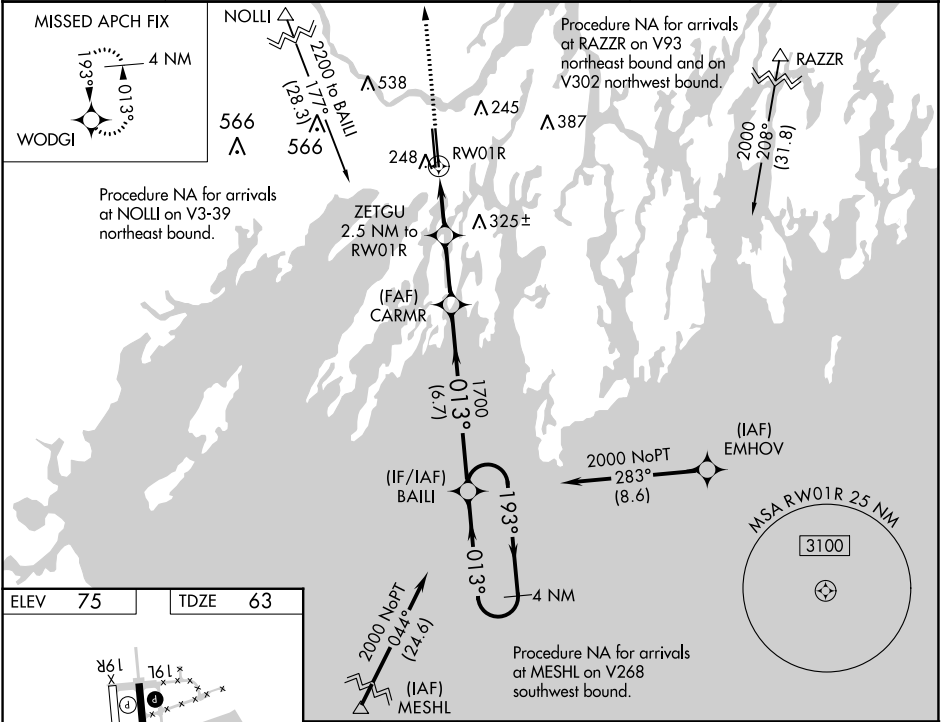
BRUNSWICK EXEC (BXM)

**⚠** Baro-VNAV NA when using Portland altimeter setting. For uncompensated Baro-VNAV systems, LNAV/VNAV NA below -15°C (5°F) or above 54°C (130°F). DME/DME RNP-0.3 NA. VDP NA when using Portland altimeter setting. When local altimeter setting not received, use Portland altimeter setting and increase LPV DA to 314, LNAV/VNAV DA to 461 and all LNAV/VNAV visibilities ¼ SM; increase all MDA 60 feet and LNAV Cat C/D visibilities ¼ SM and Circling Cat C/D visibilities ¼ SM. For inop ALS when using Portland altimeter setting, increase LNAV Cat C/D visibility to 1 ½ SM.

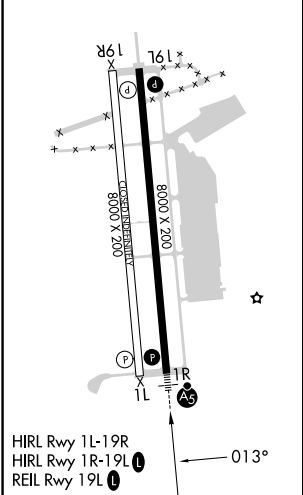


**MISSED APPROACH:**  
Climb to 2500 direct  
WODGI and hold.

|                            |   |                           |  |
|----------------------------|---|---------------------------|--|
| AWOS-3PT<br><b>134.875</b> | PORTLAND APP CON ★<br>(112°-292°) <b>119.75 269.35</b> (293°-111°) <b>120.4 299.2</b> | CLNC DEL<br><b>123.65</b> | UNICOM<br><b>122.725 (CTAF)</b> <b>📶</b> |
|----------------------------|---|---------------------------|--|



|         |         |
|---------|---------|
| ELEV 75 | TDZE 63 |
|---------|---------|



|                        |       |                             |                        |                                  |
|------------------------|-------|-----------------------------|------------------------|----------------------------------|
| 2500                   | WODGI | ZETGU<br>2.5 NM to<br>RW01R | CARMR<br>1700          | BAILI<br>4 NM<br>Holding Pattern |
| * LNAV only.           |       |                             |                        |                                  |
| RW01R *1.2 NM to RW01R |       | *900                        | 1700                   | 193° → 2000<br>← 013°            |
| -1.2 NM                |       | 1.3 NM                      | 2.5 NM                 | 6.7 NM                           |
| CATEGORY               | A     | B                           | C                      | D                                |
| LPV DA                 |       | 263-½                       | 200 (200-½)            |                                  |
| LNAV/VNAV DA           |       | 410-⅝                       | 347 (400-⅝)            |                                  |
| LNAV MDA               | 500-½ | 437 (500-½)                 | 500-¾                  | 437 (500-¾)                      |
| CIRCLING               | 560-1 | 485 (500-1)                 | 840-2¼<br>765 (800-2¼) | 840-2½<br>765 (800-2½)           |

NE-1, 28 NOV 2024 to 26 DEC 2024

NE-1, 28 NOV 2024 to 26 DEC 2024