

APP CRS	Rwy Idg	3049
176°	TDZE	842
	Apt Elev	842

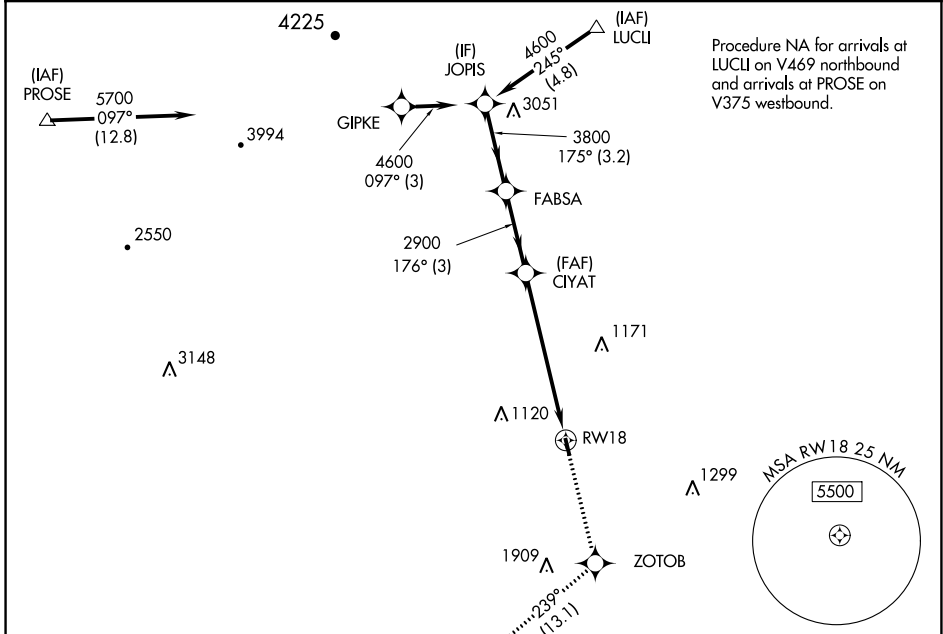
RNAV (GPS) RWY 18

NEW LONDON (W90)

RNP APCH.
 ▼ Rwy 18 helicopter visibility reduction below 1 SM NA. Procedure
 ▲ NA NA at night. Use Lynchburg altimeter setting.

MISSED APPROACH: Climb to 4000 direct ZOTOB and on track 239° to AYARA and hold.

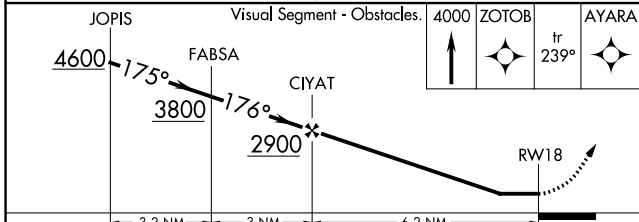
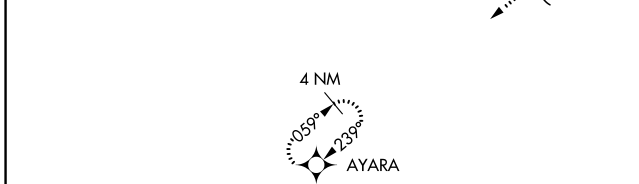
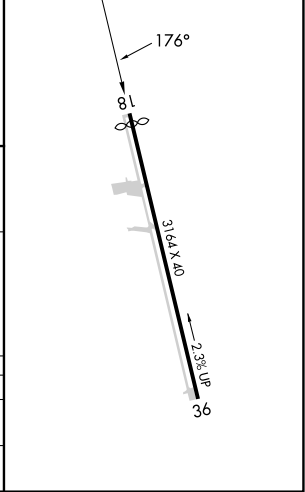
LYH ASOS 119.8	ROANOKE APP CON 135.0 254.325	UNICOM 122.8 (CTAF)
--------------------------	---	-------------------------------



NE-3, 28 NOV 2024 to 26 DEC 2024

NE-3, 28 NOV 2024 to 26 DEC 2024

ELEV 842	TDZE 842
----------	----------



	3.2 NM	3 NM	6.2 NM	
CATEGORY	A	B	C	D
LNAV MDA	1860-3	1018 (1100-3)		NA
CIRCLING	1860-3	1018 (1100-3)		NA