

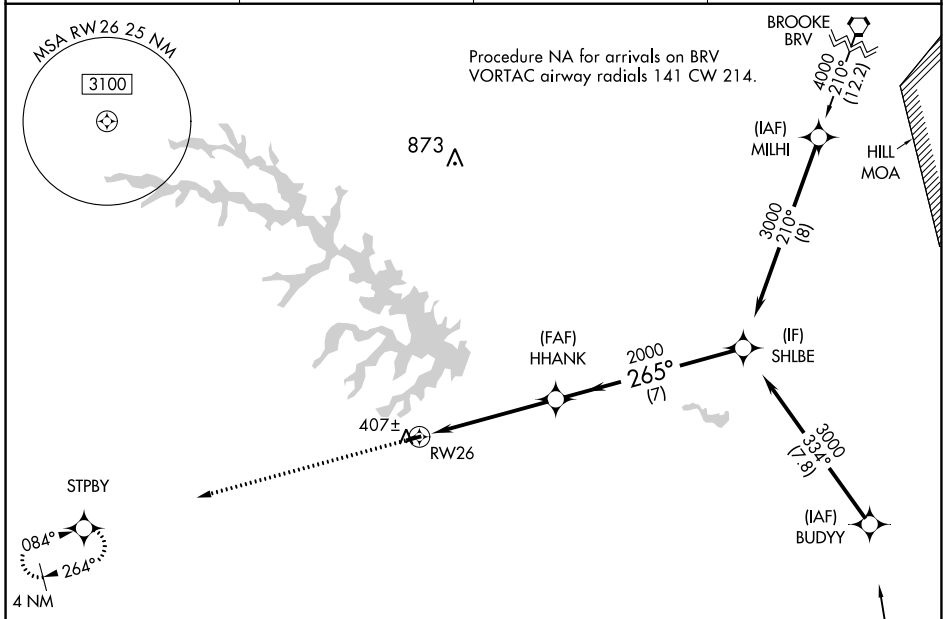
| | | |
|-------------|----------|-------------|
| APP CRS | Rwy Idg | 2558 |
| 265° | TDZE | 351 |
| | Apt Elev | 351 |

RNAV (GPS) RWY 26

LAKE ANNA (7W4)

| | | |
|-----------|--|---|
| RNP APCH. | Procedure NA at night. When local altimeter setting not received, use Louisa altimeter setting and increase all MDA 60 feet. Helicopter visibility reduction below 3 SM NA. | MISSED APPROACH: Climb to 3000 direct STPBY and hold. |
| | | |

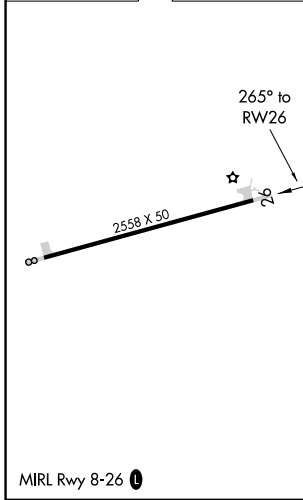
| | | | |
|--------------------------|------------------------------|--|----------------------|
| AWOS-3 120.775 | LKU AWOS-3 119.475 | POTOMAC APP CON 126.75 307.2 | CTAF 122.9 |
|--------------------------|------------------------------|--|----------------------|



NE-3, 28 NOV 2024 to 26 DEC 2024

NE-3, 28 NOV 2024 to 26 DEC 2024

| | |
|----------|----------|
| ELEV 351 | TDZE 351 |
|----------|----------|



| | | | |
|---|--------|---|----|
| Procedure NA for arrivals on RIC VORTAC airway radials 283 CW 048. | | Procedure NA for arrivals on BRV VORTAC airway radials 141 CW 214. | |
| 3000 | STPBY | Visual Segment - Obstacles. | |
| | | | |
| CATEGORY | A | B | C |
| LNAV MDA | 1360-3 | 1009 (1100-3) | NA |
| CIRCLING | 1360-3 | 1009 (1100-3) | NA |