

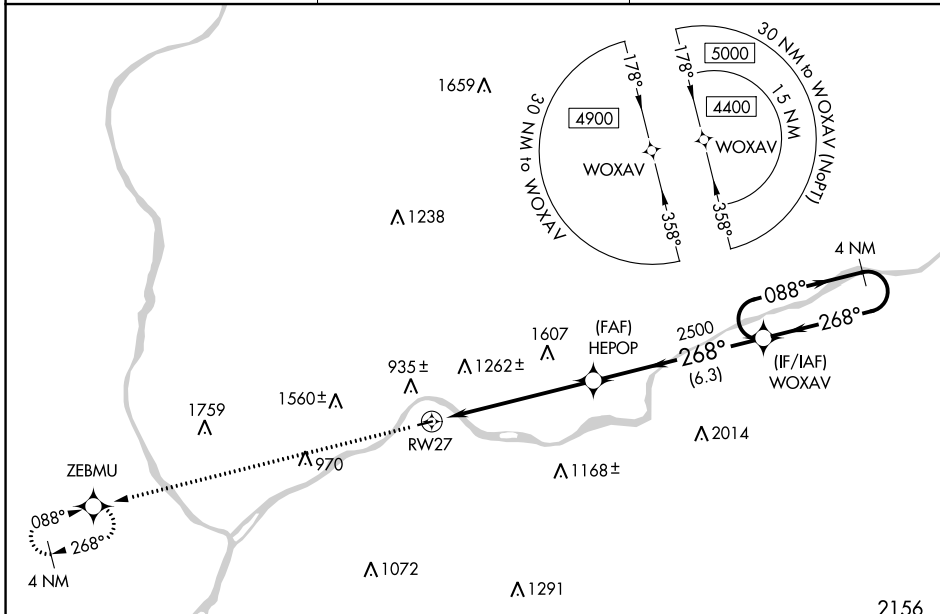
APP CRS	Rwy Idg	<b>3000</b>
<b>268°</b>	TDZE	<b>559</b>
	Apt Elev	<b>559</b>

# RNAV (GPS) RWY 27

DANVILLE (8N8)

RNP APCH - GPS.		MISSED APPROACH: Climb to 4400 direct ZEBMU and hold, continue climb-in-hold 4400.
▼	Use Williamsport altimeter setting; when not received, procedure NA.	
▲ NA	Procedure NA at night. Rwy 27 helicopter visibility reduction below 1 SM NA.	

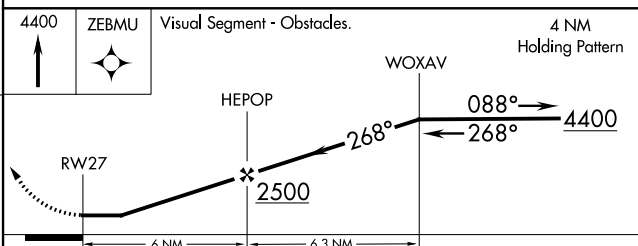
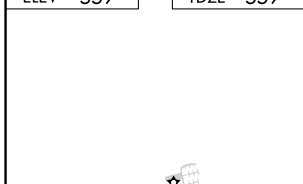
IPT ASOS <b>125.225</b>	WILKES-BARRE APP CON <b>126.3 256.7</b>	UNICOM <b>122.8 (CTAF) ①</b>
----------------------------	--	---------------------------------



NE-4, 28 NOV 2024 to 26 DEC 2024

NE-4, 28 NOV 2024 to 26 DEC 2024

ELEV 559	TDZE 559
----------	----------



MIRL Rwy 9-27 ①

CATEGORY	A	B	C	D
LNAV MDA	1540-1¼ 981 (1000-1¼)	1540-1½ 981 (1000-1½)	NA	