

APP CRS	Rwy Idg	<b>5000</b>
<b>011°</b>	TDZE	<b>65</b>
	Apt Elev	<b>65</b>

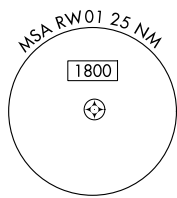
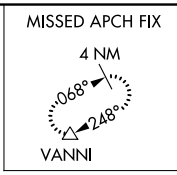
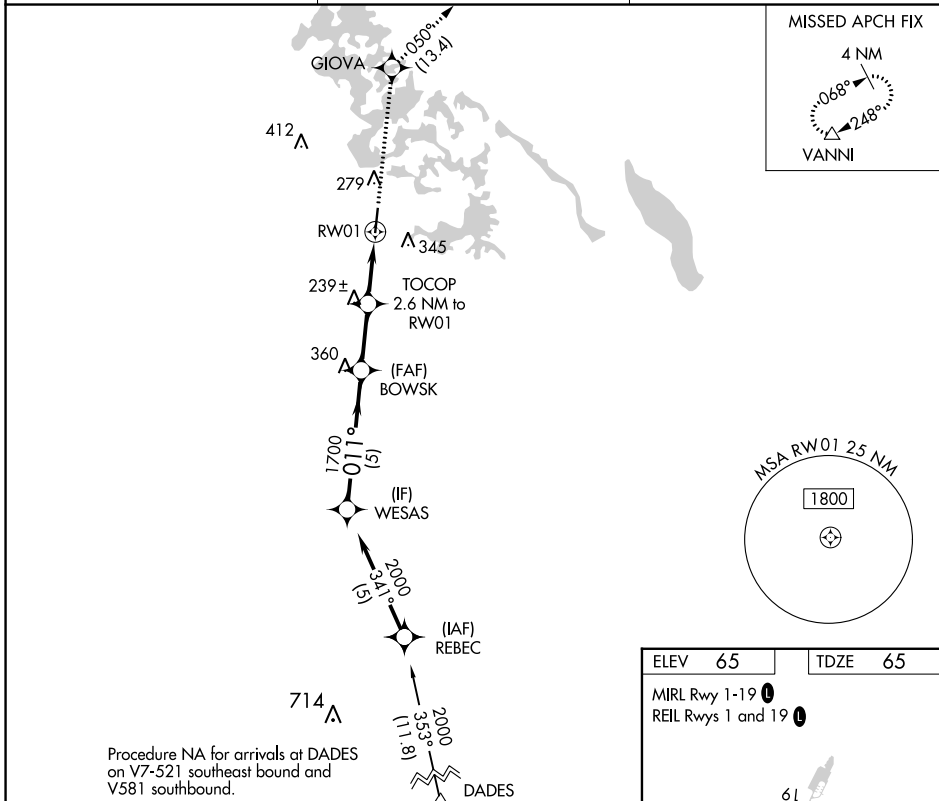
# RNAV (GPS) RWY 1

INVERNESS (INF)

**⚠** When local altimeter setting not received, use Ocala altimeter setting and increase all MDA 60 feet; and increase LNAV Cat C visibility 1/8 mile and Circling Cat C visibility 1/4 mile.  
**⚠** DME/DME RNP-0.3 NA. Visibility reduction by helicopters NA. Procedure NA at night.

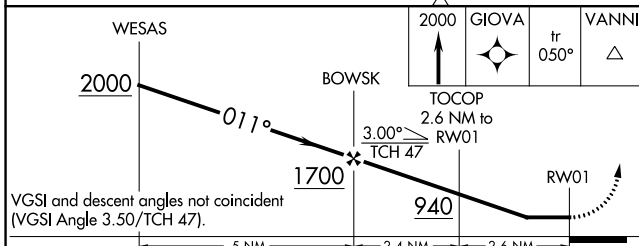
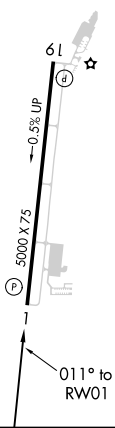
**MISSED APPROACH:** Climb to 2000 direct GIOVA and on track 050° to VANNI and hold.

AWOS-3 <b>119.975</b>	JACKSONVILLE APP CON <b>118.6 251.15</b>	UNICOM <b>122.725 (CTAF) 1</b>
--------------------------	---	-----------------------------------



ELEV 65	TDZE 65
---------	---------

MIRL Rwy 1-19 **1**  
 REIL Rwys 1 and 19 **1**



CATEGORY	A	B	C	D
LNAV MDA	500-1 435 (500-1)		500-1 1/4 435 (500-1 1/4)	NA
CIRCLING	660-1 595 (600-1)		660-1 1/2 595 (600-1 1/2)	NA

SE-3, 28 NOV 2024 to 26 DEC 2024

SE-3, 28 NOV 2024 to 26 DEC 2024