

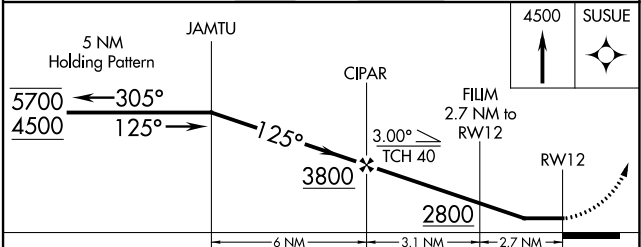
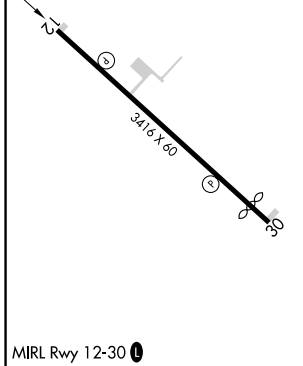
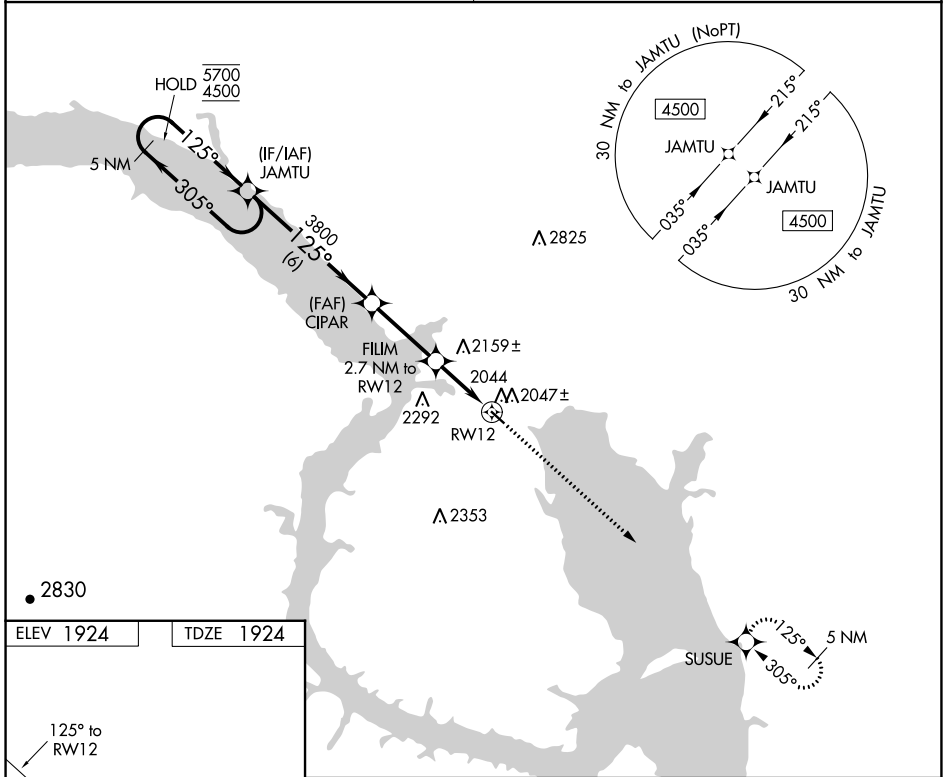
APP CRS	Rwy Idg	<b>3416</b>
<b>125°</b>	TDZE	<b>1924</b>
	Apt Elev	<b>1924</b>

# RNAV (GPS) RWY 12

NEW TOWN MUNI (Ø5D)

RNP APCH.	MISSED APPROACH: Climb to 4500 direct SUSUE and hold.
<p>▼ Use Stanley altimeter setting, when not received, use Tioga altimeter setting and increase all MDAs 40 feet. Increase Cat C visibilities ¼ SM. Rwy 12 helicopter visibility reduction below ¾ SM NA.</p> <p>▲ NA</p>	

MINNEAPOLIS CENTER <b>127.6 279.6</b>	CTAF <b>122.9</b>
--	----------------------



CATEGORY	A	B	C	D
LNAV MDA	2440-1	516 (600-1)	2440-1 $\frac{3}{8}$ 516 (600-1 $\frac{3}{8}$ )	NA
CIRCLING	2520-1 596 (600-1)	2620-1 696 (700-1)	2780-2 $\frac{1}{2}$ 856 (900-2 $\frac{1}{2}$ )	NA

NC-1, 28 NOV 2024 to 26 DEC 2024

NC-1, 28 NOV 2024 to 26 DEC 2024