

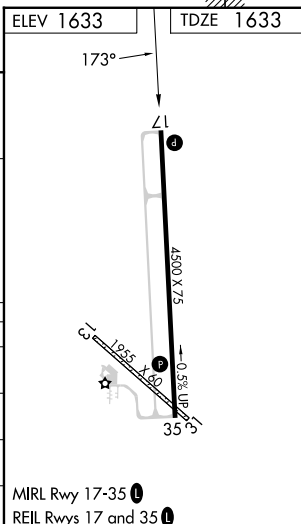
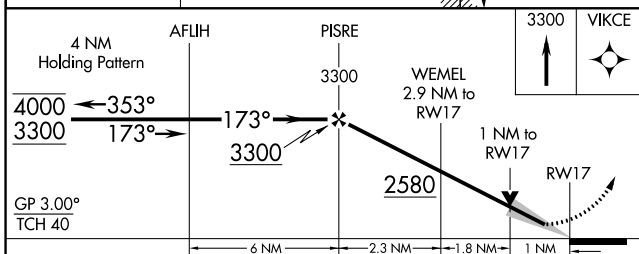
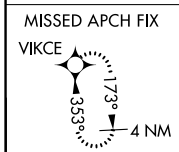
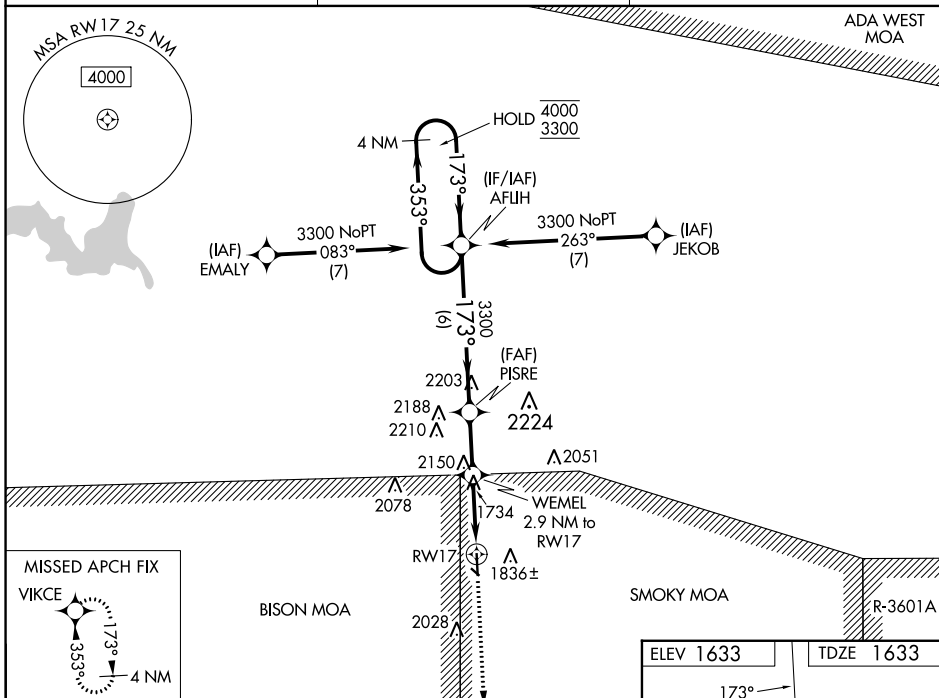
WAAS CH 69444 W17A	APP CRS 173°	Rwy Idg TDZE Apt Elev	4500 1633 1633
--	------------------------	-----------------------------	---

RNAV (GPS) RWY 17

ELLSWORTH MUNI (9K7)

RNP APCH - GPS.	MISSED APPROACH: Climb to 3300 direct VIKCE and hold.
Circling NA to Rwys 13 and 31. For uncompensated Baro-VNAV systems, LNAV/VNAV NA below -18°C or above 54°C.	

AWOS-3PT 119.675	KANSAS CITY CENTER 134.9 363.2	UNICOM 122.7 (CTAF) 0
----------------------------	--	---------------------------------



CATEGORY	A	B	C	D
LPV DA		1833-1 200 (200-1)		NA
LNAV/VNAV DA		1883-1 250 (300-1)		NA
LNAV MDA		2000-1 367 (400-1)		NA
CIRCLING	2200-1 567 (600-1)		2540-2 ³ / ₄ 907 (1000-2 ³ / ₄)	NA

NC-2, 28 NOV 2024 to 26 DEC 2024

NC-2, 28 NOV 2024 to 26 DEC 2024