

WAAS CH <b>72844</b> <b>W35A</b>	APP CRS <b>353°</b>	Rwy Idg TDZE Apt Elev	<b>4500</b> <b>1621</b> <b>1633</b>
--	------------------------	-----------------------------	---

# RNAV (GPS) RWY 35

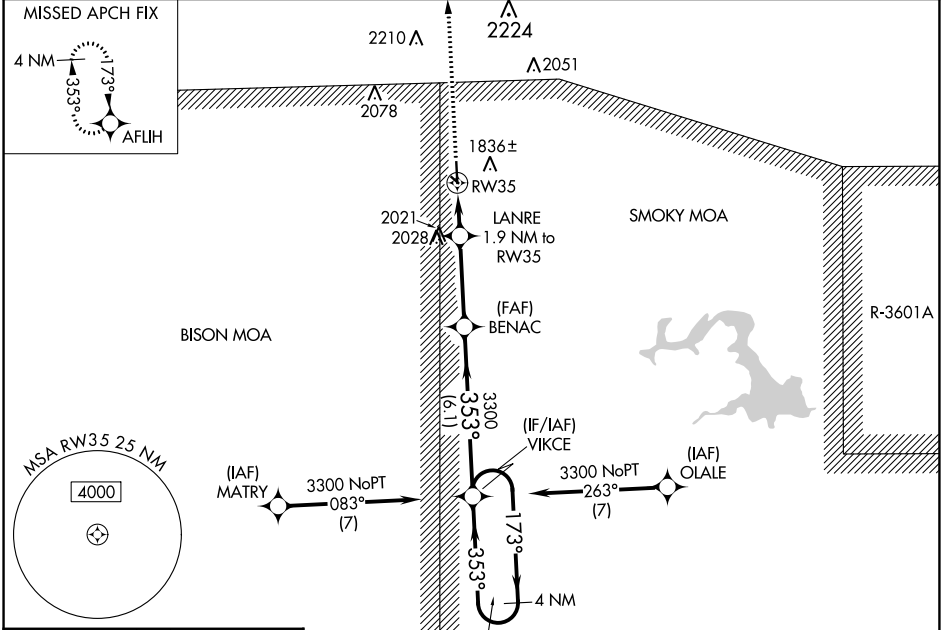
ELLSWORTH MUNI (9K7)

RNP APCH - GPS.

**⚠** Circling NA to Rwy 13 and 31. Rwy 35 helicopter visibility reduction below  $\frac{3}{4}$  NA. For uncompensated Baro-VNAV systems, LNAV/VNAV NA below -18°C or above 54°C.

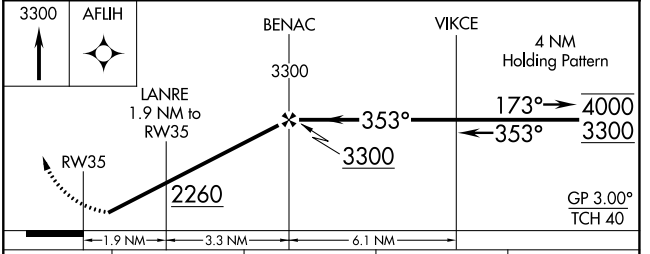
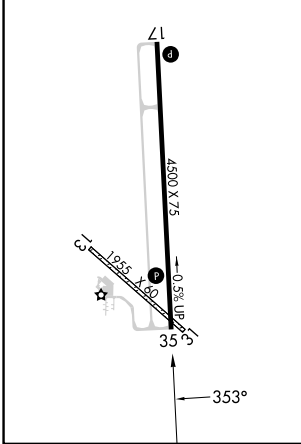
MISSED APPROACH: Climb to 3300 direct AFUHI and hold.

AWOS-3PT <b>119.675</b>	KANSAS CITY CENTER <b>134.9 363.2</b>	UNICOM <b>122.7 (CTAF) 0</b>
----------------------------	--	---------------------------------



ELEV 1633	TDZE 1621
-----------	-----------

MIRL Rwy 17-35 **1**  
REIL Rwy 17 and 35 **1**



CATEGORY	A	B	C	D
LPV DA	1871-1 250 (300-1)			NA
LNAV/VNAV DA	2094-1 $\frac{3}{8}$ 473 (500-1 $\frac{3}{8}$ )			NA
LNAV MDA	2160-1	539 (600-1)	2160-1 $\frac{1}{2}$ 539 (600-1 $\frac{1}{2}$ )	NA
<b>C</b> CIRCLING	2200-1	567 (600-1)	2540-2 $\frac{3}{4}$ 907 (1000-2 $\frac{3}{4}$ )	NA

NC-2, 28 NOV 2024 to 26 DEC 2024

NC-2, 28 NOV 2024 to 26 DEC 2024