

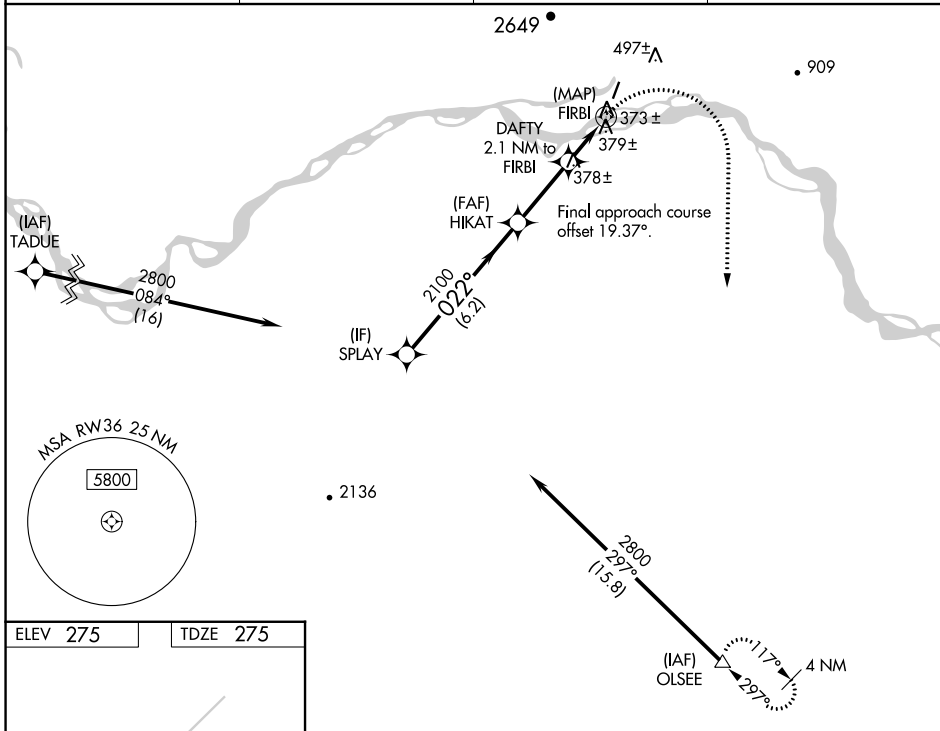
WAAS CH <b>63141</b> <b>W36A</b>	APP CRS <b>022°</b>	Rwy Idg TDZE Apt Elev	<b>3400</b> <b>275</b> <b>275</b>
--	------------------------	-----------------------------	---

# RNAV (GPS) RWY 36

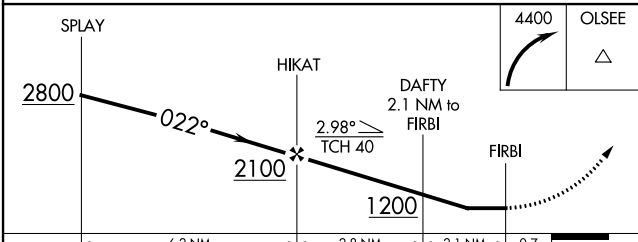
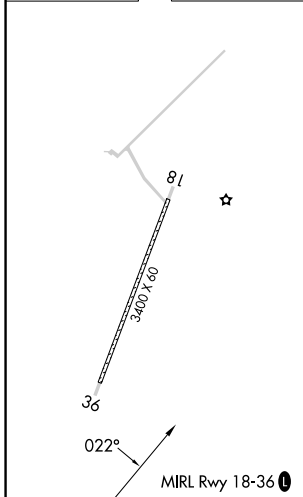
MANLEY HOT SPRINGS (MLY)(P.A.M.L)

RNP APCH - GPS.	MISSED APPROACH: Climbing right turn to 4400 direct OLSEE and hold.
<p>▼ Use Tanana altimeter setting; when not received, procedure NA.</p> <p>▲ NA Circling NA west of Rwy 18-36. Rwy 36 helicopter visibility reduction below 3/4 SM NA. Procedure NA at night.</p> <p>☁ -21°C</p>	

TAL/PATA ASOS <b>135.1</b>	ANCHORAGE CENTER <b>120.9 319.2</b>	FAIRBANKS RADIO <b>122.3 122.65</b>	UNICOM <b>122.8(CTAF) 0</b>
-------------------------------	--	--	--------------------------------



ELEV 275	TDZE 275
----------	----------



CATEGORY	A	B	C	D
LP MDA	720-1	445 (500-1)	720-1 3/8 445 (500-1 3/8)	NA
LNAV MDA	1020-1 745 (800-1)	1020-1 1/4 745 (800-1 1/4)	1020-2 745 (800-2)	NA
CIRCLING	1140-1 1/4 865 (900-1 1/4)	1280-1 1/4 1005 (1100-1 1/4)	1580-3 1305 (1400-3)	NA

AK, 31 OCT 2024 to 26 DEC 2024

AK, 31 OCT 2024 to 26 DEC 2024