

WAAS CH <b>50146</b> <b>W15A</b>	APP CRS <b>153°</b>	Rwy Idg TDZE Apt Elev	<b>6001</b> <b>6878</b> <b>6878</b>
--	------------------------	-----------------------------	---

# RNAV (GPS) RWY 15

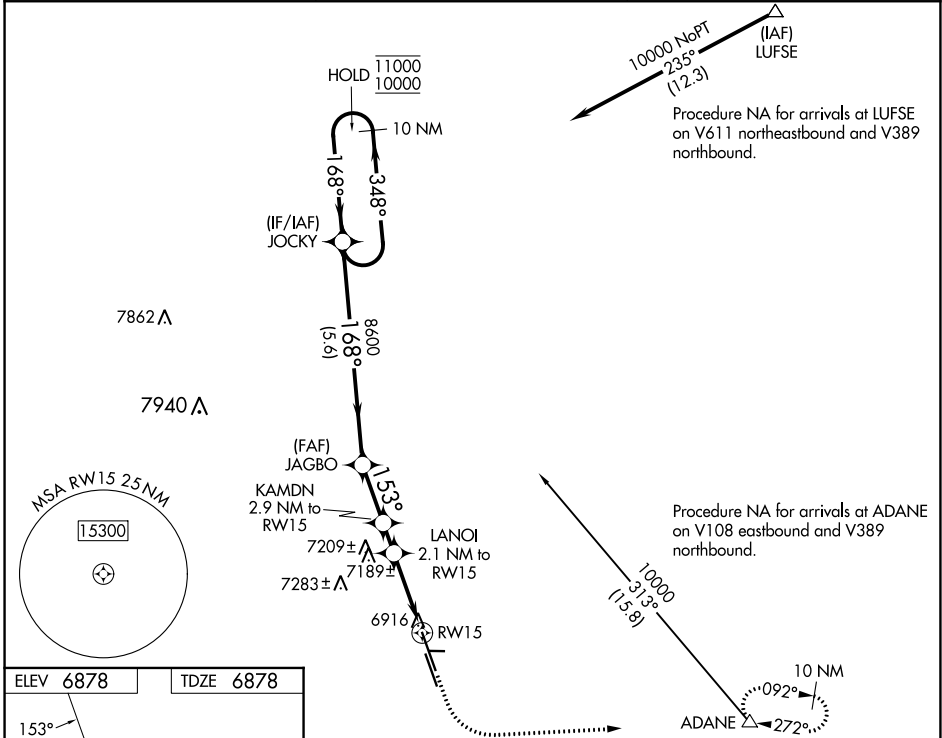
MEADOW LAKE (FLY)

RNP APCH - GPS.

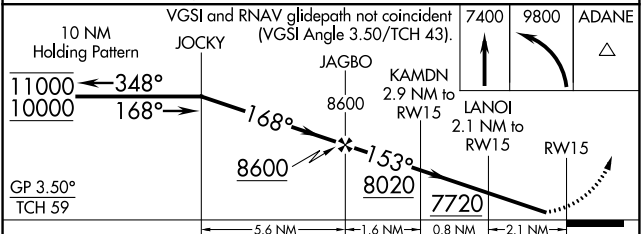
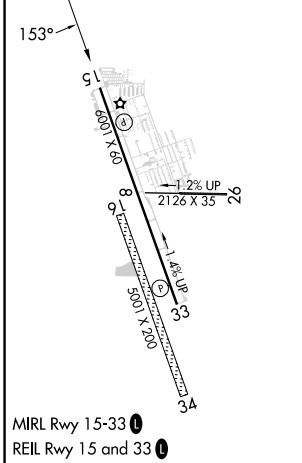
▼ Rwy 15 helicopter visibility reduction below 1 SM NA. Night landing: Rwy 15 NA.  
 ▲ For uncompensated Baro-VNAV systems, LNAV/VNAV NA below -28°C or above 54°C. Circling NA southwest of Rwy 15-33. Circling NA to Rwsy 16, 26, 8 and 34.

MISSED APPROACH: Climb to 7400, then climbing left turn to 9800 direct ADANE and hold, continue climb-in-hold to 9800.

AWOS-3PT <b>118.45</b>	SPRINGS APP CON <b>124.0 257.875</b>	UNICOM <b>122.7 (CTAF) 0</b>
---------------------------	---	---------------------------------



ELEV <b>6878</b>	TDZE <b>6878</b>
------------------	------------------



CATEGORY	A	B	C	D
LPV DA	7176-1	298 (300-1)		NA
LNAV/VNAV DA	7343-1 $\frac{3}{8}$	465 (500-1 $\frac{1}{2}$ )		NA
LNAV MDA	7400-1	522 (600-1)		NA
CIRCLING	7400-1 522 (600-1)	7440-1 562 (600-1)		NA

SW-1, 28 NOV 2024 to 26 DEC 2024

SW-1, 28 NOV 2024 to 26 DEC 2024