

WAAS CH 42744 W34A	APP CRS 343°	Rwy Idg TDZE 5375 Apt Elev 5374
--	------------------------	---

RNAV (GPS) RWY 34

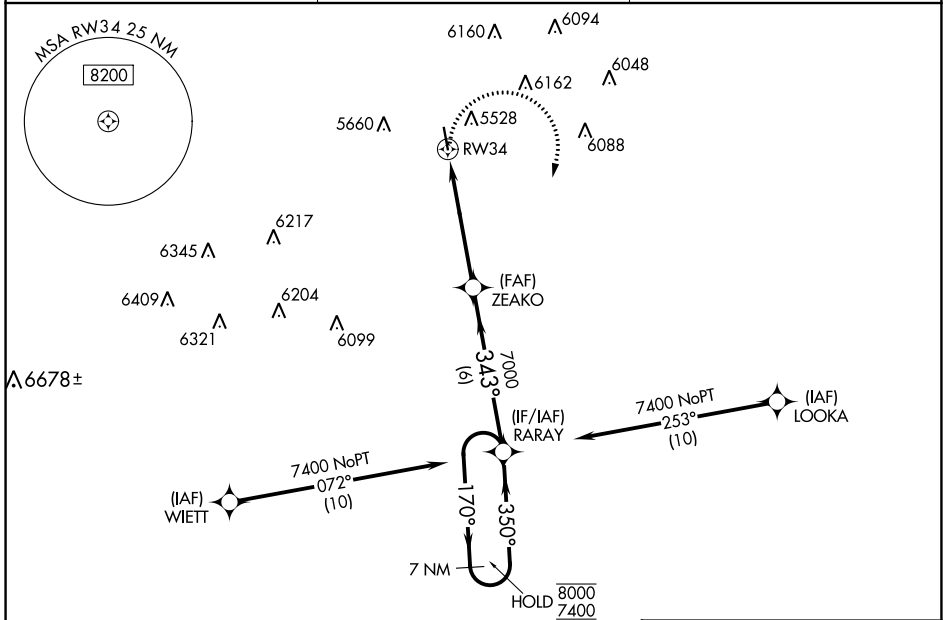
LIMON MUNI (LIC)

RNP APCH - GPS.

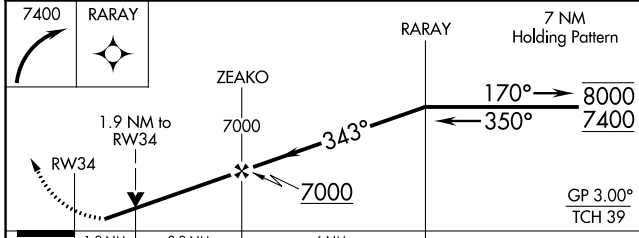
⚠ Rwy 34 helicopter visibility reduction below $\frac{3}{4}$ SM NA. For uncompensated Baro-VNAV systems, LNAV/VNAV NA below -25°C or above 54°C.

MISSED APPROACH: Climbing right turn to 7400 direct RARAY and hold.

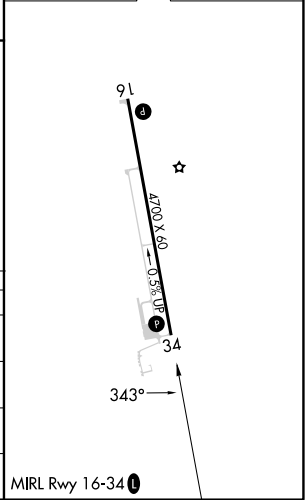
ASOS 121.125	DENVER CENTER 133.4 377.175	CTAF 122.9 0
------------------------	---------------------------------------	------------------------



7400	RARAY
------	-------



ELEV 5374	TDZE 5365
-----------	-----------



CATEGORY	A	B	C	D
LPV DA	5615- $\frac{3}{4}$ 250 (300- $\frac{3}{4}$)			NA
LNAV/VNAV DA	5824-1 $\frac{3}{8}$ 459 (500-1 $\frac{3}{8}$)			NA
LNAV MDA	6000-1 635 (700-1)	6000-1 $\frac{3}{4}$ 635 (700-1 $\frac{3}{4}$)		NA
C CIRCLING	6000-1 626 (700-1)	6220-2 $\frac{1}{2}$ 846 (900-2 $\frac{1}{2}$)		NA

SW-1, 28 NOV 2024 to 26 DEC 2024

SW-1, 28 NOV 2024 to 26 DEC 2024