

WAAS CH 42937 W13A	APP CRS 126°	Rwy Idg 3314 TDZE 160 Apt Elev 162
--	------------------------	---

RNAV (GPS) RWY 13

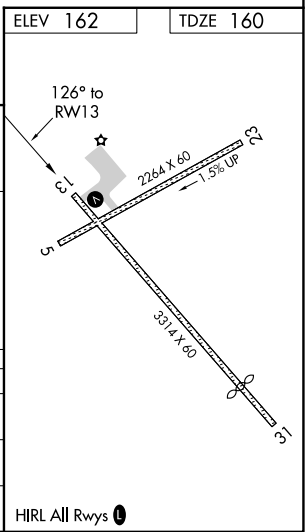
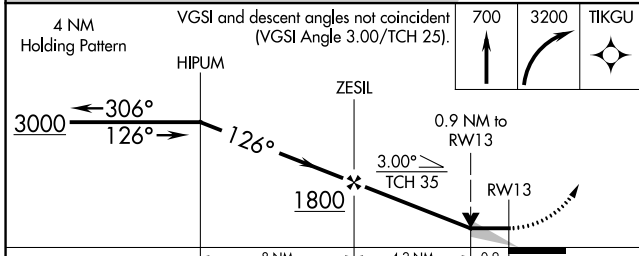
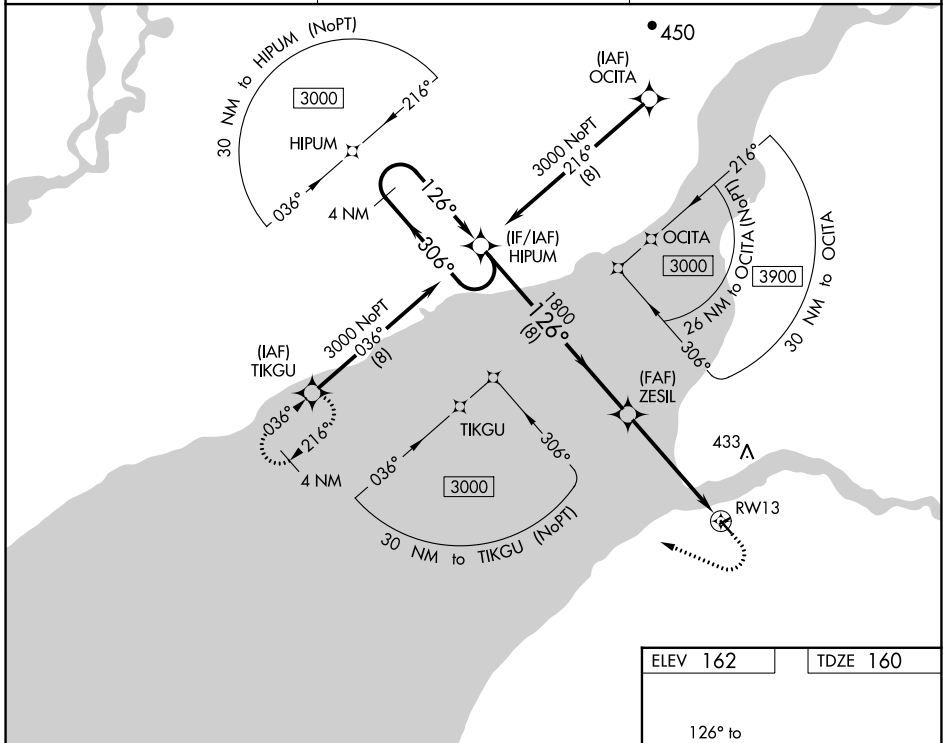
SOUTH NAKNEK NR 2 (WSN)(PFWS)

RNP APCH.

▼ When local altimeter setting not received, use King Salmon altimeter setting and increase all
▲ MDA 40 feet. Circling Rwy 5 NA at night. VDP NA when using King Salmon altimeter setting.

MISSED APPROACH: Climb to 700 then climbing right turn to 3200 direct TIKGU and hold.

AWOS-3P 121.575	ANCHORAGE CENTER 124.8 354.0	CTAF 122.9 0
---------------------------	--	------------------------



CATEGORY	A	B	C	D
LP MDA	480-1	320 (400-1)		NA
LNAV MDA	500-1	340 (400-1)		NA
CIRCLING	560-1 398 (400-1)	620-1 458 (500-1)		NA

AK, 31 OCT 2024 to 26 DEC 2024

AK, 31 OCT 2024 to 26 DEC 2024