

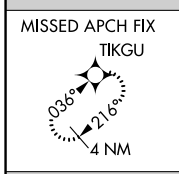
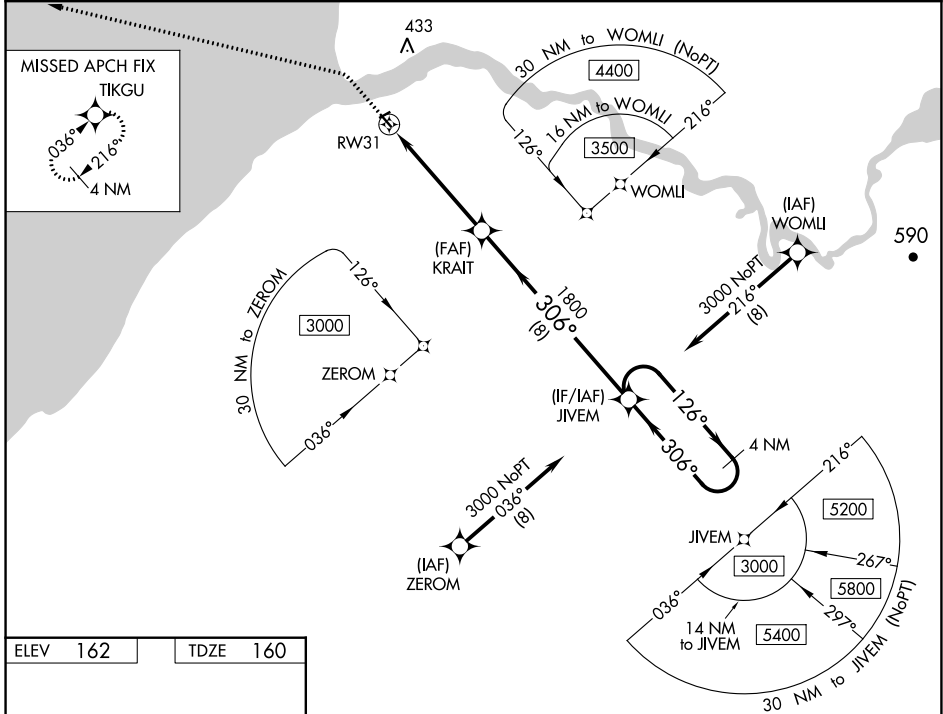
WAAS CH 87137 W31B	APP CRS 306°	Rwy ldg 2755 TDZE 160 Apt Elev 162
--	------------------------	---

RNAV (GPS) RWY 31

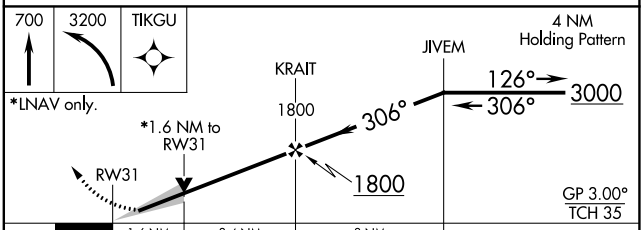
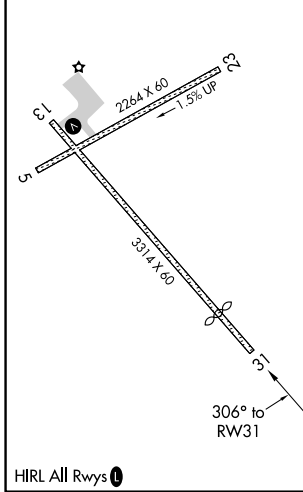
SOUTH NAKNEK NR 2 (WSN)(PFWS)

RNP APCH.
▼ Baro-VNAV and VDP NA when using King Salmon altimeter setting. For uncompensated Baro-VNAV systems, LNAV/VNAV NA below -21°C or above 54°C. When local altimeter setting not received, use King Salmon altimeter setting and increase all DA/MDA 40 feet. Circling Rwy 5 NA at night.
▲ MISSED APPROACH: Climb to 700 then climbing left turn to 3200 direct TIKGU and hold.

AWOS-3P 121.575	ANCHORAGE CENTER 124.8 354.0	CTAF 122.9
---------------------------	--	----------------------



ELEV 162	TDZE 160
----------	----------



CATEGORY	A	B	C	D
LPV DA	410-1	250 (300-1)		NA
LNAV/VNAV DA	410-1	250 (300-1)		NA
LNAV MDA	700-1	540 (600-1)		NA
C CIRCLING	700-1	538 (600-1)		NA

AK, 31 OCT 2024 to 26 DEC 2024

AK, 31 OCT 2024 to 26 DEC 2024