

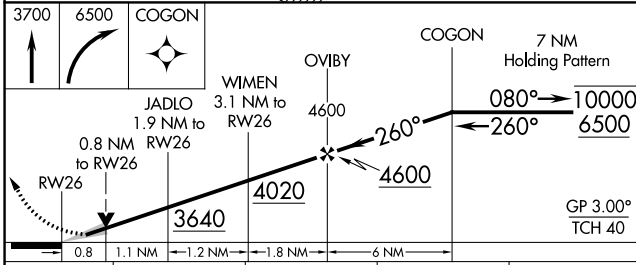
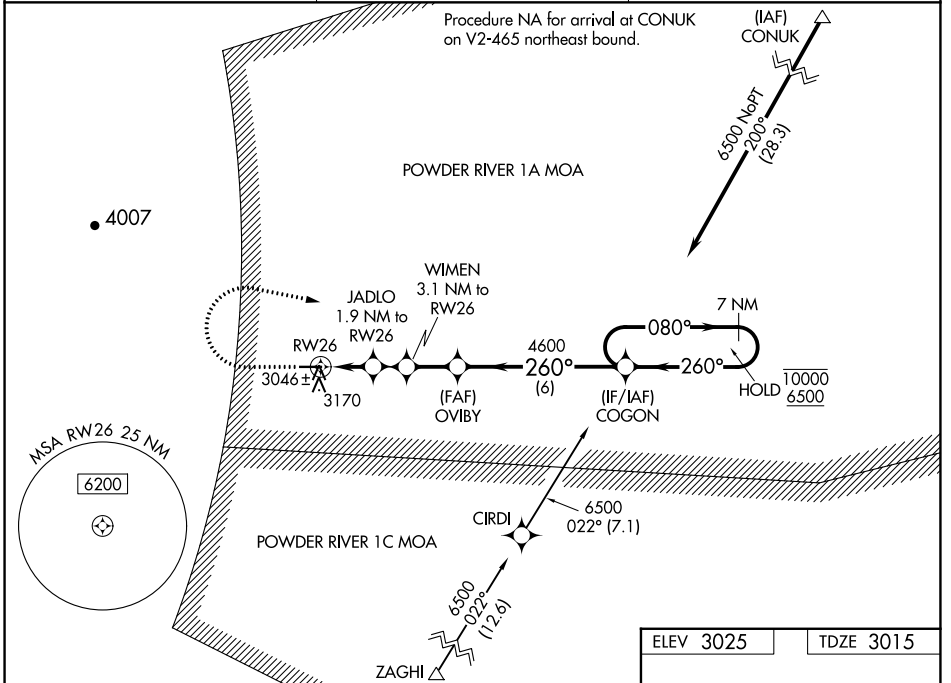
WAAS CH 65644 W26A	APP CRS 260°	Rwy Idg 4491 TDZE 3015 Apt Elev 3025
--	------------------------	--

RNAV (GPS) RWY 26

BIG HORN COUNTY (ØØU)

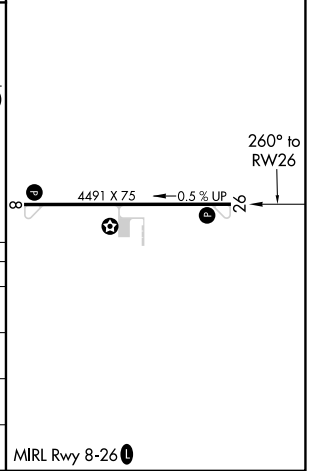
RNP APCH-GPS.	MISSED APPROACH: Climb to 3700 then climbing right turn to 6500 direct COGON and hold, continue climb-in-hold to 6500.
<p>⚠ For uncompensated Baro-VNAV systems, LNAV/VNAV NA below -20°C or above 54°C.</p>	

AWOS-3 118.325	SALT LAKE CENTER 132.425 317.45	UNICOM 122.8 (CTAF) ①
--------------------------	---	---------------------------------



ELEV 3025	TDZE 3015
-----------	-----------

CATEGORY	A	B	C	D
LPV DA	3215-1	200 (200-1)		NA
LNAV/VNAV DA	3265-1	250 (300-1)		NA
LNAV MDA	3300-1	285 (300-1)		NA
CIRCLING	3480-1 455 (500-1)	3500-1 475 (500-1)		NA



NW-1, 28 NOV 2024 to 26 DEC 2024

NW-1, 28 NOV 2024 to 26 DEC 2024

MIRL Rwy 8-26 ①