

WAAS CH 70735 W11A	APP CRS 111°	Rwy Idg TDZE 100 Apt Elev 100	3998
--	------------------------	---	-------------

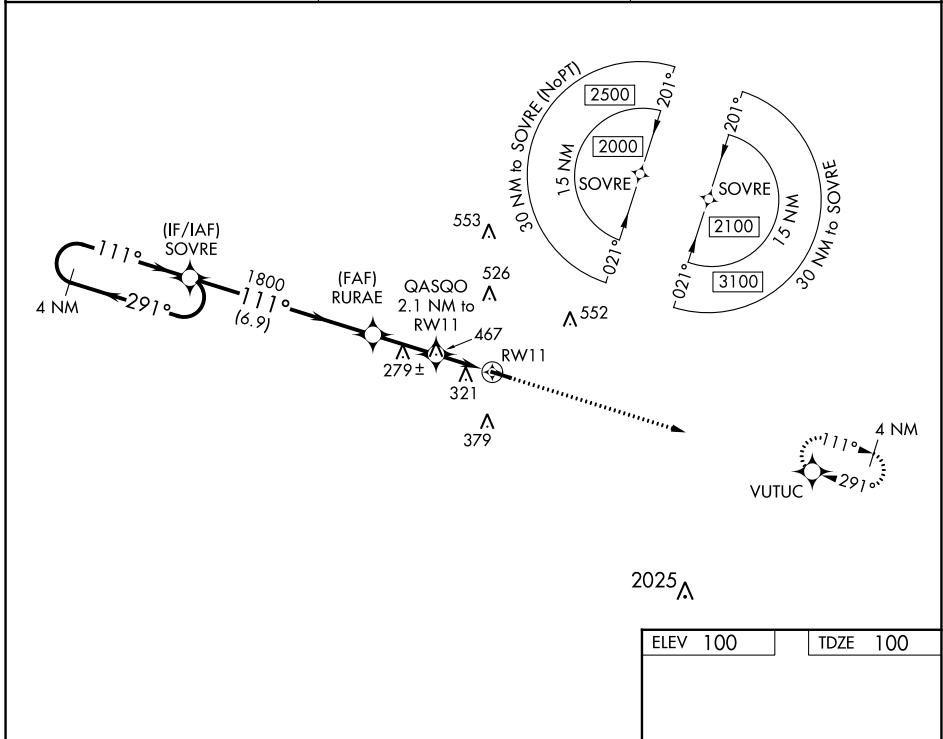
RNAV (GPS) RWY 11

GENEVA MUNI (33J)

⚠ DME/DME RNP-0.3 NA. Procedure NA at night. Rwy 11 helicopter visibility reduction below 1 SM NA. Use Cairns AAF altimeter setting, when not received, use Dothan altimeter setting and increase all MDA 40 feet, increase LP and LNAV Cat C visibility $\frac{1}{8}$ SM and Circling Cat C visibility $\frac{1}{4}$ mile.

⚠ NA MISSED APPROACH: Climb to 2000 direct VUTUC and hold.

KOZR ATIS 111.2 316.15	CAIRNS APP CON * 133.75 270.35	UNICOM 122.8 (CTAF) 0
----------------------------------	--	---------------------------------



SE-4, 28 NOV 2024 to 26 DEC 2024

SE-4, 28 NOV 2024 to 26 DEC 2024

4 NM Holding Pattern		2000 VUTUC	
CATEGORY	A	B	D
LP MDA	600-1	500 (500-1)	NA
LNAV MDA	640-1	540 (600-1)	NA
C CIRCLING	700-1 600 (600-1)	720-1 620 (700-1)	NA

MIRL Rwy 11-29 **0**