

APP CRS	Rwy Idg	3998
291°	TDZE	100
	Apt Elev	100

RNAV (GPS) RWY 29

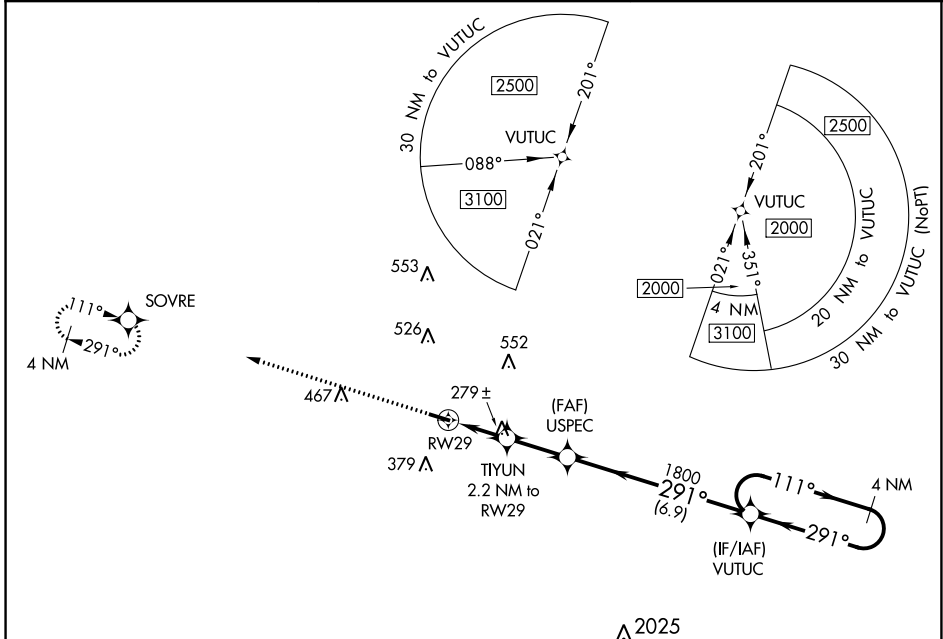
GENEVA MUNI (33J)

▽ DME/DME RNP-0.3 NA. Procedure NA at night. Use Cairns AAF altimeter setting, when not received, use Dothan altimeter setting and increase all MDA 40 feet, and increase all Cat C visibilities ¼ SM. Rwy 29 helicopter visibility reduction below 1 SM NA.

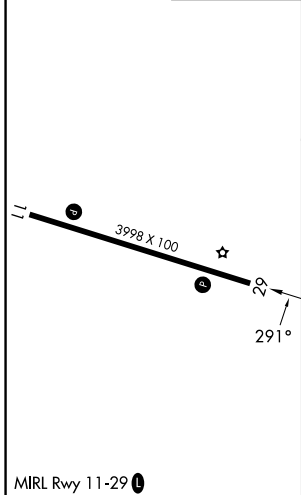
△ NA

MISSED APPROACH: Climb to 2000 direct SOVRE and hold.

KOZR ATIS 111.2 316.15	CAIRNS APP CON ★ 133.75 270.35	UNICOM 122.8 (CTAF) 0
----------------------------------	------------------------------------------	---------------------------------



ELEV 100	TDZE 100
----------	----------



2000	SOVRE	4 NM Holding Pattern		
TUYUN 2.2 NM to RWY 29	USPEC	VUTUC	111° → 2000	
2.2 NM	2.3 NM	6.9 NM	← 291°	
CATEGORY	A	B	C	D
LNAV MDA	600-1	500 (500-1)	600-1 3/8 500 (500-1 3/8)	NA
C CIRCLING	700-1 600 (600-1)	720-1 620 (700-1)	900-2 1/4 800 (800-2 1/4)	NA

SE-4, 28 NOV 2024 to 26 DEC 2024

SE-4, 28 NOV 2024 to 26 DEC 2024