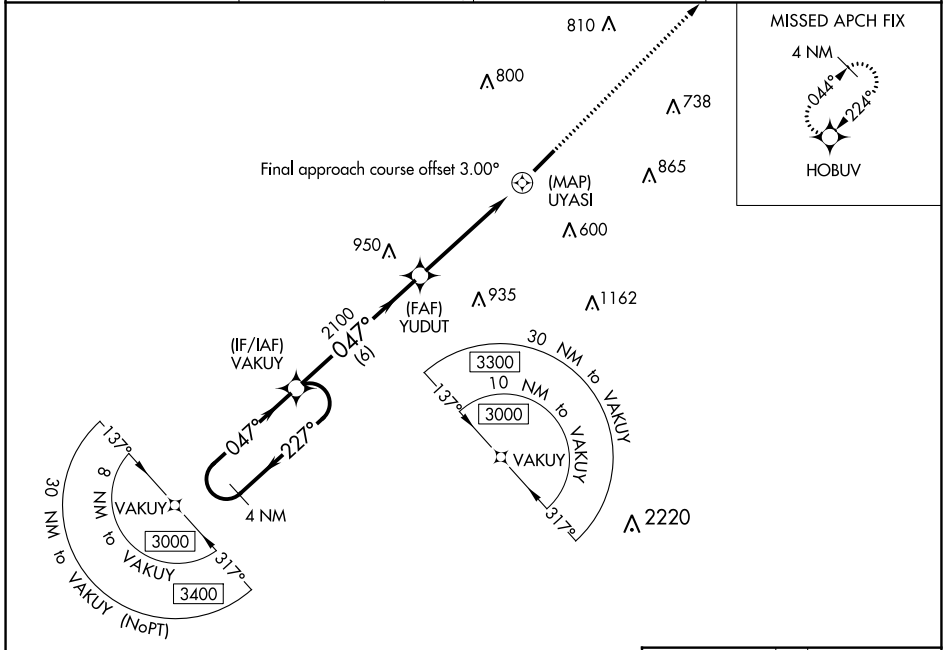


| | | | |
|--|------------------------|---|-------------|
| WAAS CH 97338 W04A | APP CRS 047° | Rwy Idg TDZE 276 Apt Elev 276 | 5500 |
|--|------------------------|---|-------------|

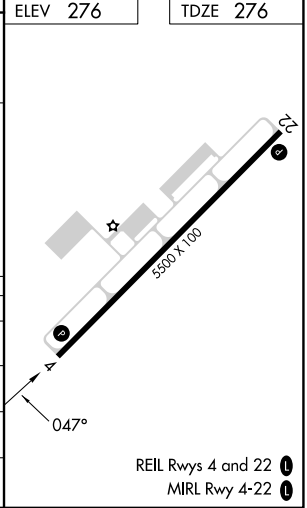
RNAV (GPS) RWY 4

CONWAY RGNL (CXW)

| | | | |
|--|--|----------------------------------|---|
| <p>Baro-VNAV NA. Use Bill and Hillary Clinton National/Adams Field altimeter setting; when not received, procedure NA. DME/DME RNP-0.3 NA.</p> | <p>MISSED APPROACH: Climb to 2600 direct HOBUV and hold.</p> | | |
| <p>AWOS-2 118.775</p> | <p>LITTLE ROCK APP CON 135.4 353.6 (040°-239°) 119.5 306.2 (240°-039°)</p> | <p>CLNC DEL 121.2</p> | <p>UNICOM 123.05 (CTAF) 0</p> |



| | | | | |
|---|---------------------------|---------------------------|--------------------------|-------------------------|
| 4 NM Holding Pattern | <p>2600 HOBUV</p> | | | |
| <p>3000 ← 227°</p> <p>→ 047°</p> <p>GP 3.00° TCH 40</p> | <p>VAKUY</p> | <p>YUDUT</p> <p>2100</p> | <p>UYASI</p> <p>RW04</p> | <p>22</p> |
| | 6 NM | 5 NM | 0.6 | |
| CATEGORY | A | B | C | D |
| LPV DA | 583-1 307 (400-1) | | | |
| LNAV/VNAV DA | 658-1¼ 382 (400-1¼) | | | |
| LNAV MDA | 1340-1¼ 1064 (1100-1¼) | 1340-1½ 1064 (1100-1½) | 1340-3 1064 (1100-3) | 1380-3 1104 (1200-3) |
| C CIRCLING | 1340-1¼ 1064 (1100-1¼) | 1340-1½ 1064 (1100-1½) | 1340-3 1064 (1100-3) | 1380-3 1104 (1200-3) |



SC-1, 28 NOV 2024 to 26 DEC 2024

SC-1, 28 NOV 2024 to 26 DEC 2024