

APP CRS	Rwy Idg	N/A
133°	TDZE	N/A
	Apt Elev	21

RNAV (GPS)-A

GOLD BEACH MUNI (4S1)

RNP APCH-GPS.

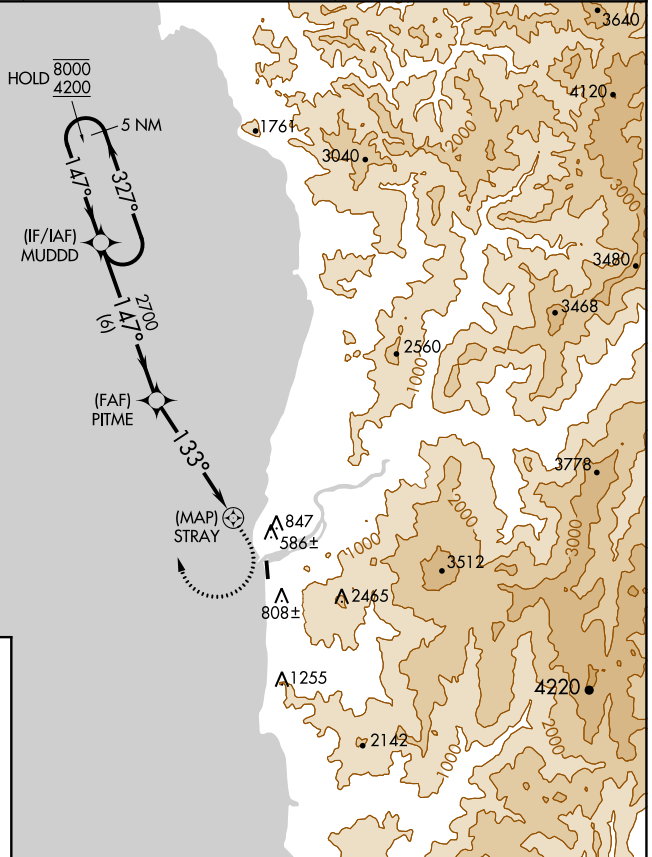
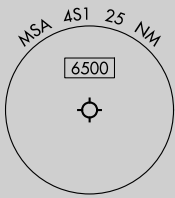
⚠ Circling NA east of Rwy 16-34.
⚠ Procedure NA at night.

MISSED APPROACH: Climb to 2100 then climbing right turn to 4200 direct MUDDD and hold.

AWOS-3
118.15

SEATTLE CENTER
127.55 254.35

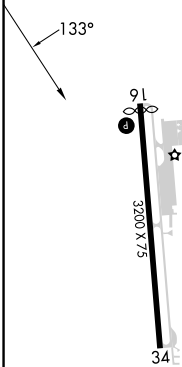
UNICOM
122.8 (CTAF) 0



NW-1, 28 NOV 2024 to 26 DEC 2024

NW-1, 28 NOV 2024 to 26 DEC 2024

ELEV 21



MIRL Rwy 16-34 0
 REIL Rws 16 and 34 0

	MUDDD		2100	4200	MUDDD
	5 NM Holding Pattern		↑	↷	✦
	8000 ← 327°	→ 147°			
	4200				
		147°			
			PITME		
			2700		
					STRAY
					↷
		6 NM		5 NM	
CATEGORY	A	B	C	D	
CIRCLING	1740-2½	1719 (1800-2½)	1740-3	1719 (1800-3)	NA