

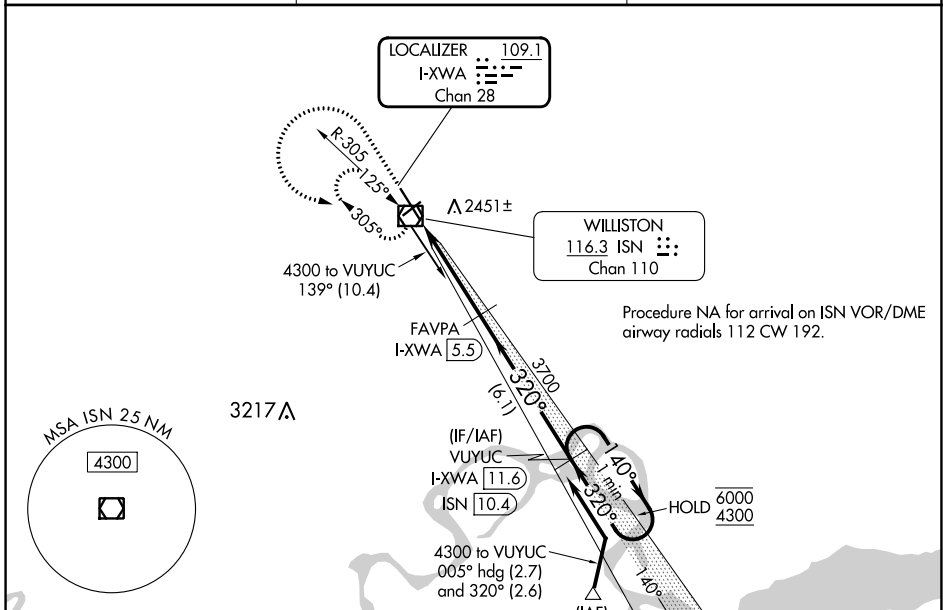
LOC/DME I-XWA <b>109.1</b> Chan 28	APP CRS <b>320°</b>	Rwy ldg <b>7503</b> TDZE <b>2350</b> Apt Elev <b>2353</b>
--	------------------------	---

# ILS or LOC RWY 32

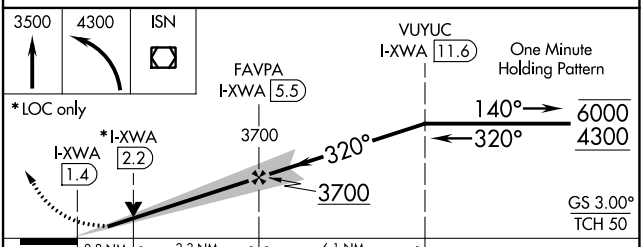
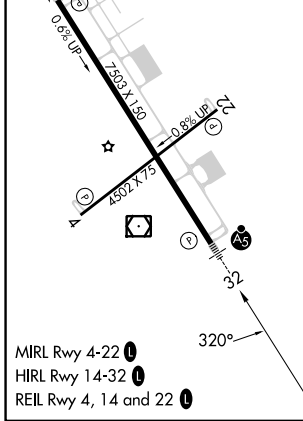
WILLISTON BASIN INTL (XWA)

DME required.		MALSR 	MISSED APPROACH: Climb to 3500 then climbing left turn to 4300 direct ISN VOR/DME and hold, continue climb-in-hold to 4300.
 For inop ALS, increase S-LOC 32 Cat C/D visibility to ½ SM.			

ASOS <b>125.925</b>	SALT LAKE CITY CENTER <b>126.85 305.2</b>	UNICOM <b>122.8 (CTAF) 1</b>
------------------------	--	---------------------------------



ELEV 2353	<b>D</b>	TDZE 2350
-----------	----------	-----------



CATEGORY	A	B	C	D
S-ILS 32	2550-½		200 (200-½)	
S-LOC 32	2660-½		310 (400-½)	
<b>C</b> CIRCLING	2760-1 407 (500-1)	2820-1 467 (500-1)	2820-1½ 467 (500-1½)	2920-2 567 (600-2)

NC-1, 28 NOV 2024 to 26 DEC 2024

NC-1, 28 NOV 2024 to 26 DEC 2024