

(ISN6.ISN) 23334

WILLISTON SIX DEPARTURE

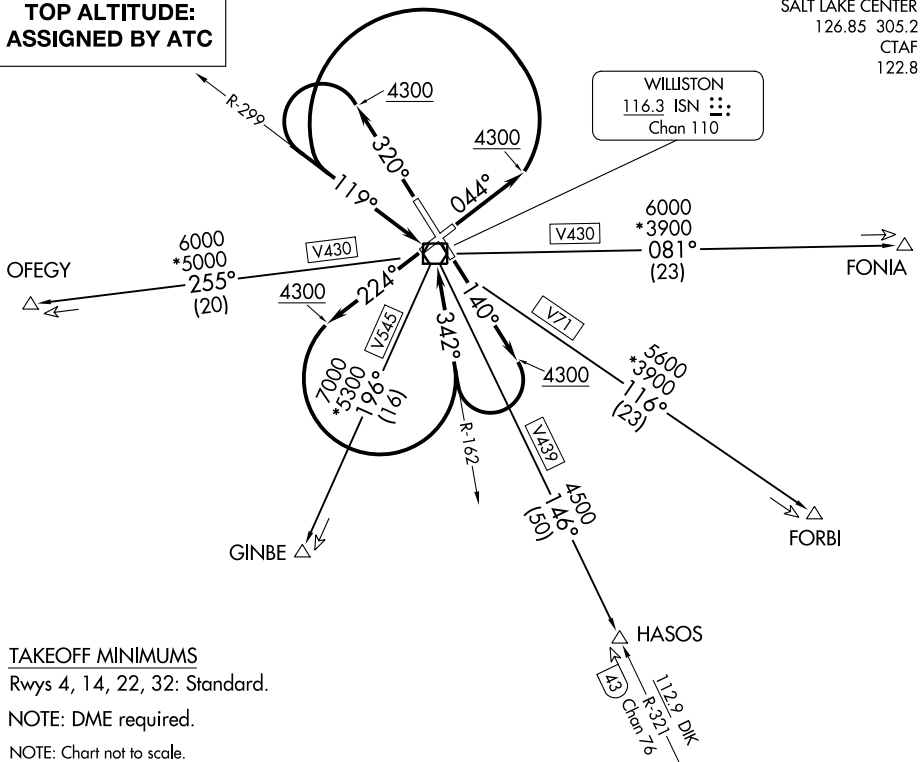
AL-11234 (FAA)

WILLISTON BASIN INTL (XWA)
WILLISTON, NORTH DAKOTA

**TOP ALTITUDE:
ASSIGNED BY ATC**

SALT LAKE CENTER
126.85 305.2
CTAF
122.8

WILLISTON
116.3 ISN
Chan 110



TAKEOFF MINIMUMS

Rwys 4, 14, 22, 32: Standard.

NOTE: DME required.

NOTE: Chart not to scale.

DEPARTURE ROUTE DESCRIPTION

TAKEOFF RUNWAY 4: Climb on heading 044° to 4300 then climbing left turn to intercept ISN VOR/DME R-299 to ISN VOR/DME, thence. . . .

TAKEOFF RUNWAY 14: Climb on heading 140° to 4300 then climbing right turn to intercept ISN VOR/DME R-162 to ISN VOR/DME, thence. . . .

TAKEOFF RUNWAY 22: Climb on heading 224° to 4300 then climbing left turn to intercept ISN VOR/DME R-162 to ISN VOR/DME, thence. . . .

TAKEOFF RUNWAY 32: Climb on heading 320° to 4300 then climbing left turn to intercept ISN VOR/DME R-299 to ISN VOR/DME, thence. . . .

. . . .on (transition). Maintain ATC assigned altitude. Expect filed altitude 10 minutes after departure.

FONIA TRANSITION (ISN6.FONIA): From over ISN VOR/DME on ISN R-081 to FONIA.

FORBI TRANSITION (ISN6.FORBI): From over ISN VOR/DME on ISN R-116 to FORBI.

GINBE TRANSITION (ISN6.GINBE): From over ISN VOR/DME on ISN R-196 to GINBE.

HASOS TRANSITION (ISN6.HASOS): From over ISN VOR/DME on ISN R-146 and DIK R-321 to HASOS.

OFEGY TRANSITION (ISN6.OFEGY): From over ISN VOR/DME on ISN R-255 to OFEGY.

WILLISTON SIX DEPARTURE

(ISN6.ISN) 17JUN21

WILLISTON, NORTH DAKOTA
WILLISTON BASIN INTL (XWA)

NC-1, 28 NOV 2024 to 26 DEC 2024

NC-1, 28 NOV 2024 to 26 DEC 2024