

APP CRS	Rwy Idg	3000
170°	TDZE	273
	Apt Elev	273

RNAV (GPS) RWY 17

DEAN GRIFFIN MEML (M24)

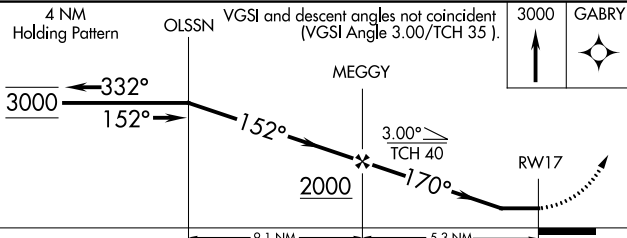
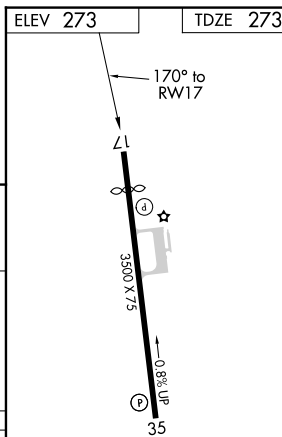
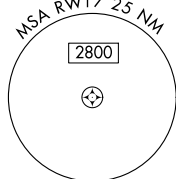
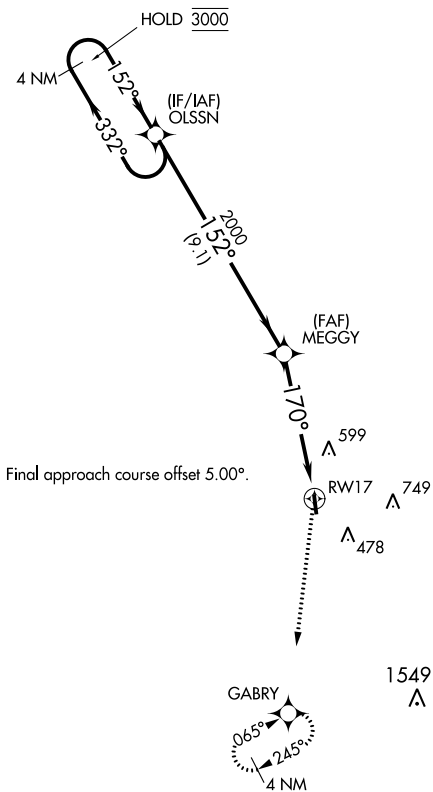
RNP APCH - GPS.
 ▼ Rwy 17 helicopter visibility reduction below 3/4 SM NA.
 ▲ NA Use Hattiesburg Bobby L Chain Muni altimeter setting.

MISSED APPROACH: Climb to 3000 direct GABRY and hold, continue climb-in-hold to 3000.

HBG ASOS
135.425

GULFPORT APP CON ★
127.5 254.25

UNICOM
122.8 (CTAF) 0



CATEGORY	A	B	C	D
LNAV MDA	880-1	607 (700-1)		NA
CIRCLING	880-1 607 (700-1)	1040-1 767 (800-1)		NA

MIRL Rwy 17-35 0

SC-4, 28 NOV 2024 to 26 DEC 2024

SC-4, 28 NOV 2024 to 26 DEC 2024