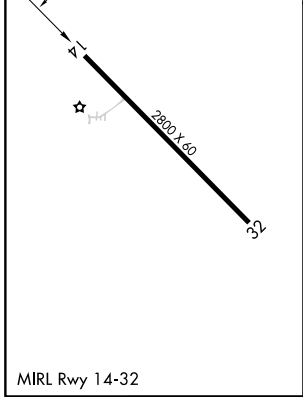
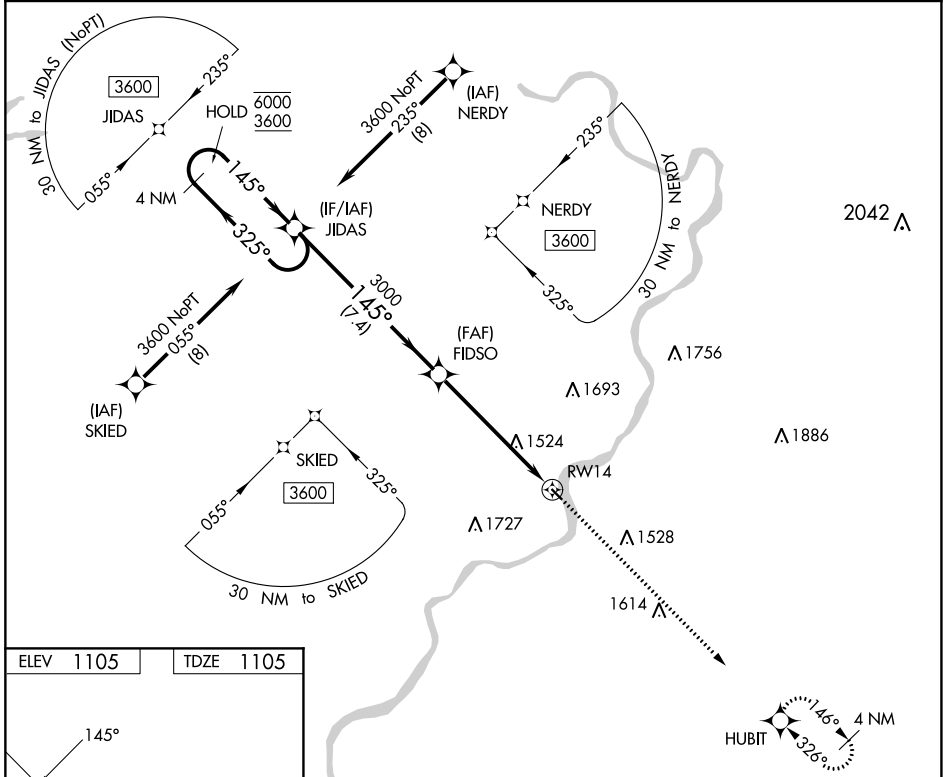


WAAS CH 97343 W14A	APP CRS 145°	Rwy Idg TDZE 1105 Apt Elev 1105	2800
--	------------------------	---	-------------

RNAV (GPS) RWY 14

MCVILLE (6P7)

RNP APCH.		MISSED APPROACH: Climb to 4000 direct HUBIT and hold.
Procedure NA at night. Rwy 14 helicopter visibility reduction below 1 SM NA. Use Pittsburgh/Butler Rgnl altimeter setting.		
BTP AWOS-3PT 121.45	JOHNSTOWN APP CON ★ 121.2	UNICOM 123.0 (CTAF)



4 NM Holding Pattern		JIDAS	Visual Segment - Obstacles.	4000	HUBIT
6000 ← 325°		← 145° →	145°	FIDSO	RWY 14
3600			3000		
		7.4 NM	5.8 NM		
CATEGORY		A	B	C	D
LP MDA		1840-1	735 (800-1)		NA
LNAV MDA		1840-1	735 (800-1)		NA
CIRCLING		1860-1 755 (800-1)	1880-1 775 (800-1)		NA

NE-4, 28 NOV 2024 to 26 DEC 2024

NE-4, 28 NOV 2024 to 26 DEC 2024