

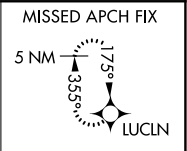
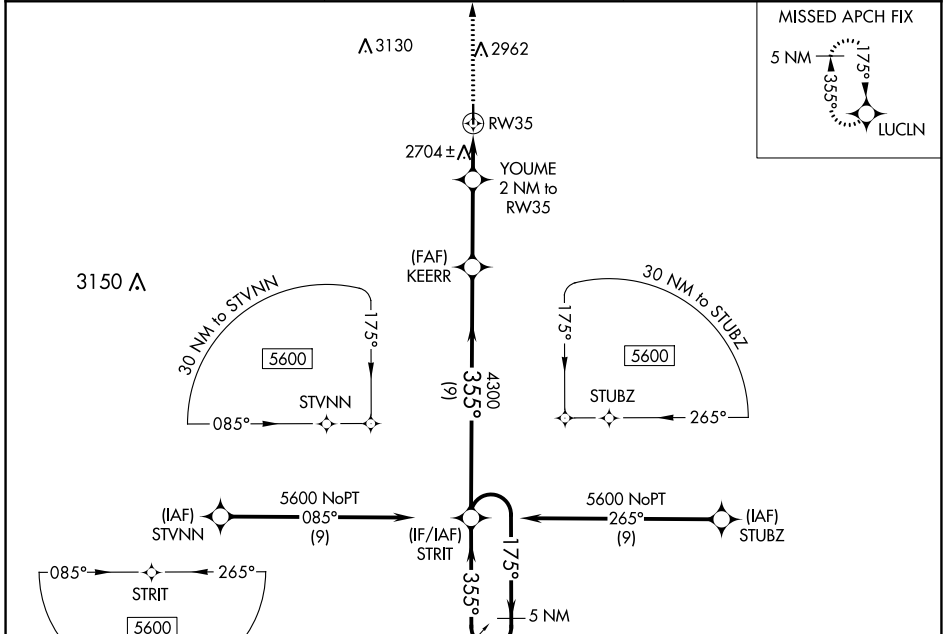
WAAS CH <b>42644</b> <b>W35A</b>	APP CRS <b>355°</b>	Rwy Idg <b>4000</b> TDZE <b>2631</b> Apt Elev <b>2637</b>
--	------------------------	---

# RNAV (GPS) RWY 35

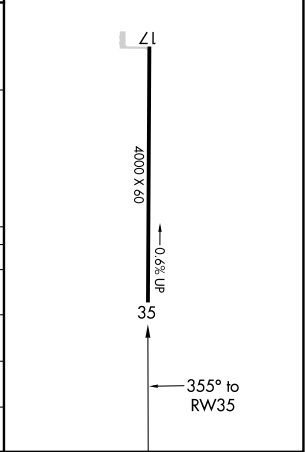
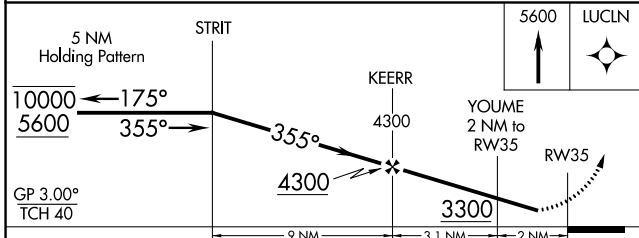
GOVE COUNTY (1QK)

RNP APCH-GPS.	MISSED APPROACH: Climb to 5600 direct LUCLN and hold.
<p><b>V</b> Rwy 35 helicopter visibility reduction below 3/4 SM NA.</p> <p><b>A</b> NA Baro-VNAV NA. Use Hill City altimeter setting.</p>	

HLC ASOS <b>118.425</b>	DENVER CENTER <b>132.7 226.675</b>	CTAF <b>122.90</b>
----------------------------	---------------------------------------	-----------------------



ELEV 2637	TDZE 2631
MIRL Rwy 17-35	



CATEGORY	A	B	C	D
LPV DA	3001-1	370 (400-1)		NA
LNAV/VNAV DA	3001-1	370 (400-1)		NA
LNAV MDA	3080-1	449 (500-1)		NA
<b>C</b> CIRCLING	3340-1 703 (800-1)	3400-1 763 (800-1)		NA

NC-2, 28 NOV 2024 to 26 DEC 2024

NC-2, 28 NOV 2024 to 26 DEC 2024