

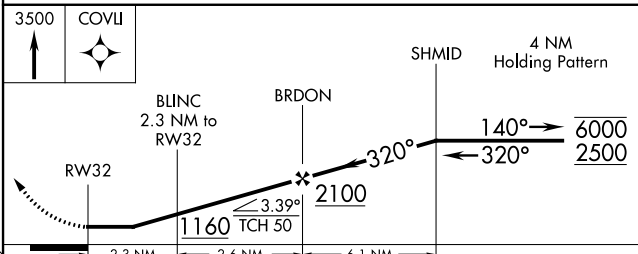
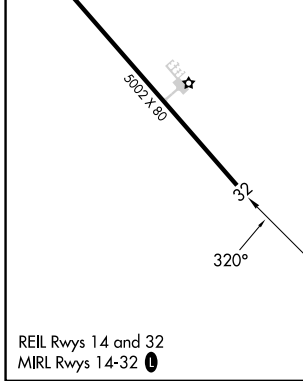
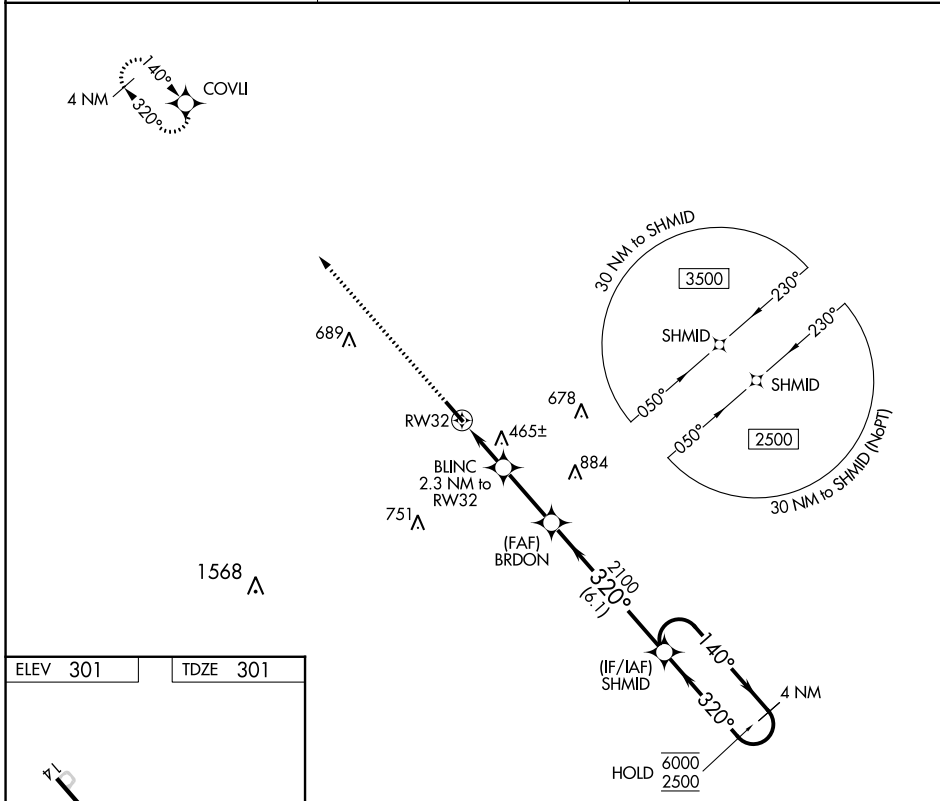
APP CRS	Rwy Idg	5002
320°	TDZE	301
	Apt Elev	301

RNAV (GPS) RWY 32

FRANKLIN FLD (Ø7A)

RNP APCH - GPS.	MISSED APPROACH: Climb to 3500 direct COVLI and hold.
<p>⚠ Rwy 32 helicopter visibility reduction below 1 SM NA.</p> <p>⚠ NA Procedure NA at night. Use Troy altimeter setting.</p>	

TOI ASOS 120.925	MONTGOMERY APP CON * 121.2 269.05	UNICOM 122.8 (CTAF) Ø
----------------------------	---	--



CATEGORY	A	B	C	D
LNAV MDA	780-1	479 (500-1)	780-1 $\frac{3}{8}$	479 (500-1 $\frac{3}{8}$)
CIRCLING	840-1	539 (600-1)	900-1 $\frac{1}{2}$ 599 (600-1 $\frac{1}{2}$)	1060-2 $\frac{1}{2}$ 759 (800-2 $\frac{1}{2}$)

SE-4, 28 NOV 2024 to 26 DEC 2024

SE-4, 28 NOV 2024 to 26 DEC 2024