

BLUEMONT, VIRGINIA

# COPTER RNAV (GPS) 037°

22251

APCH CRS	Rwy Idg	50
037°	TDZE	1707
	Arprt Elev	1707

AL-11678 [USN]

BLUEGRASS (9VA5)

RNP APCH

▼ Obtain local altimeter on Bluegrass Advsy, when not rcvd use DULLES Intl altimeter. FEMA SPECIAL FACILITY (Bluegrass) normal opr 0745-1630L Mon-Fri. Phone 504-542-3014 for PPR.

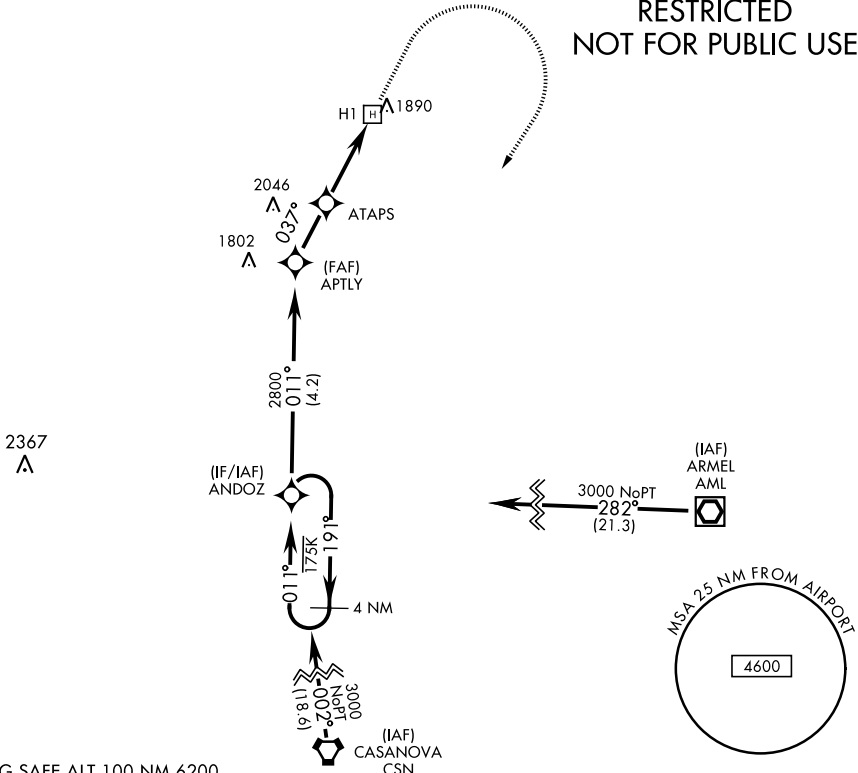
MISSED APPROACH: Climb to 2700 then climbing right turn to 3000 direct ANDOZ and hold.

POTOMAC APP CON  
120.45 306.925

BLUEGRASS ADVISORY ★  
126.2 241.0

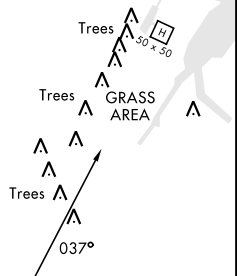
Visibility reduction by Helicopters NA.

## RESTRICTED NOT FOR PUBLIC USE



EMERG SAFE ALT 100 NM 6200

4 NM Holding Pattern	ANDOZ	2700	3000	ANDOZ	ELEV 1707	TDZE 1707
3000	191° ←	011° →	011°	APTLY	ATAPS	H1
		2800	037°		2660	4.77° TCH 40
				1.2 NM	1.8 NM	
CATEGORY	COPTER					
LNAY MDA	2220-1 513 (600-1)					
WASHINGTON DULLES INTL ALTIMETER SETTING						
LNAY MDA	2460-1 753 (800-1)					



BLUEMONT, VIRGINIA  
Amdt 1 08SEP22

39°04'N-77°53'W

BLUEGRASS (9VA5)

# COPTER RNAV (GPS) 037°

NE-3, 28 NOV 2024 to 26 DEC 2024

NE-3, 28 NOV 2024 to 26 DEC 2024