

COPTER VOR/DME or TACAN 056°

VORTAC LDN 114.3 Chan 90	APCH CRS 056°	Rwy Idg TDZE 1707 Arpt Elev 1707
--	-------------------------	--

AL-11678 [USN]

BLUEGRASS (9VA5)

▼ Circling not authorized.
Visibility reduction by helicopter NA.

MISSED APPROACH: Climb to 4000, then right turn to intercept LDN VORTAC R-056 to WLCAT and hold.

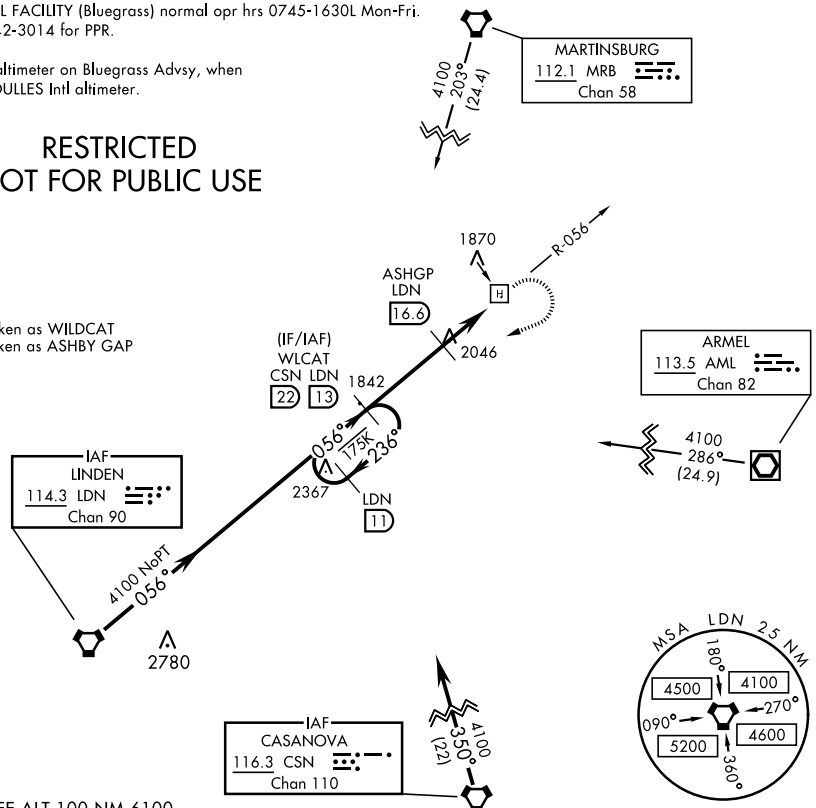
POTOMAC APP CON 120.45 306.925	BLUEGRASS ADVISORY ★ 126.2 241.0
--	--

FEMA SPECIAL FACILITY (Bluegrass) normal opr hrs 0745-1630L Mon-Fri.
Phone 540-542-3014 for PPR.

Obtain local altimeter on Bluegrass Advsy, when not rcvd use DULLES Intl altimeter.

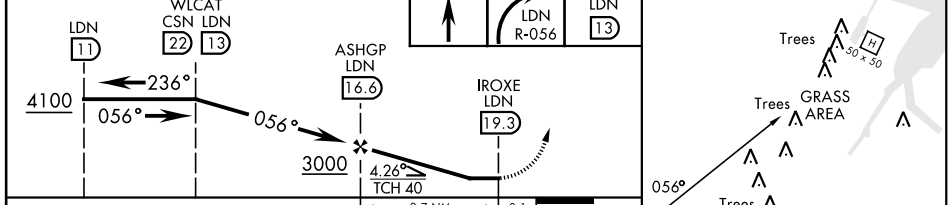
RESTRICTED NOT FOR PUBLIC USE

WLCAT - spoken as WILDCAT
ASHGP - spoken as ASHBY GAP



EMERG SAFE ALT 100 NM 6100

ELEV 1707	TDZE 1707
-----------	-----------



CATEGORY	COPTER		
H-056	2440-1	733	(800-1)
DULLES INTL ALTIMETER SETTING			
H-056	2680-1¼	973	(1000-1¼)

COPTER VOR/DME or TACAN 056°

NE-3, 28 NOV 2024 to 26 DEC 2024

NE-3, 28 NOV 2024 to 26 DEC 2024