

RADAR required

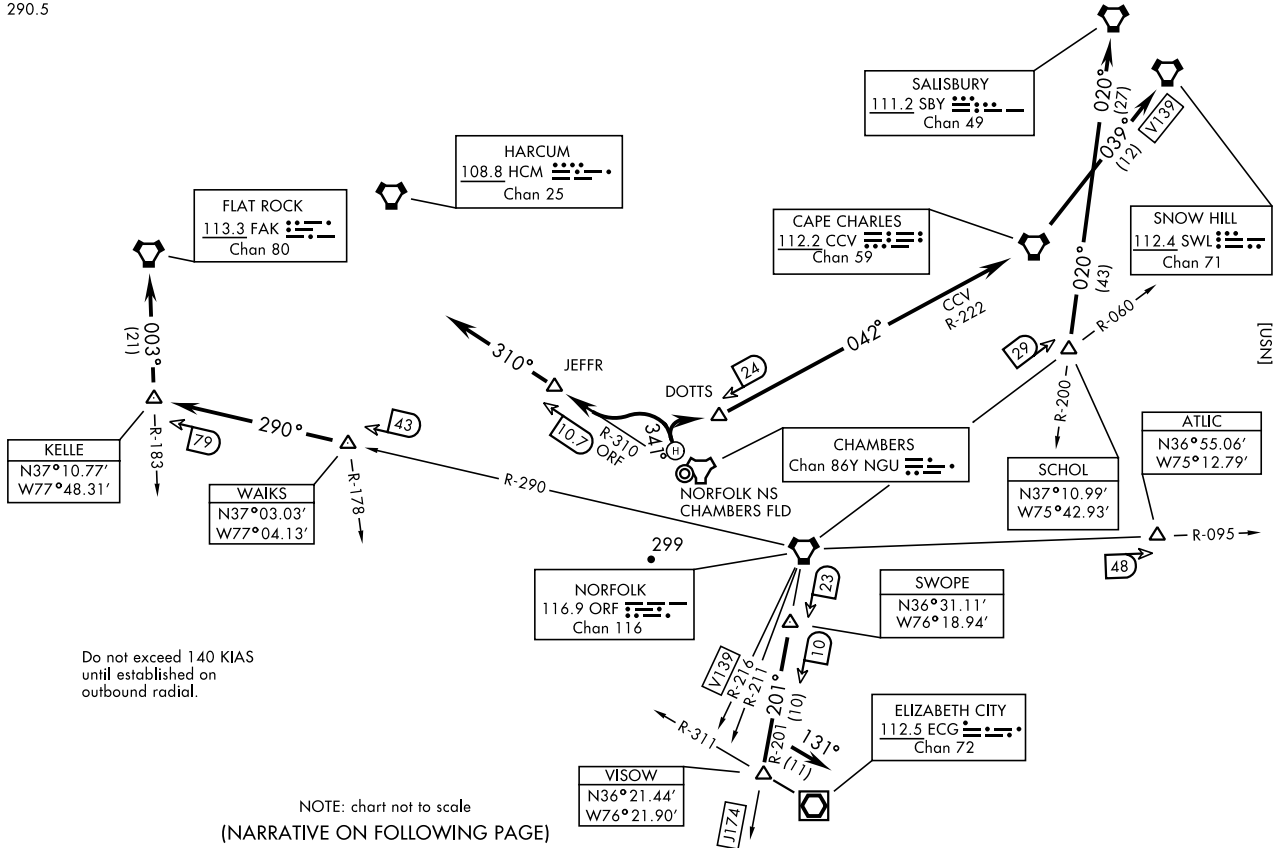
| Rwy | Knots    | 60  | 120  | 180  | 240  | 300  | 360  |
|-----|----------|-----|------|------|------|------|------|
| H1  | V/V(fpm) | 500 | 1000 | 1500 | 2000 | 2500 | 3000 |

Minimum Climb Rate to 500

COPPER PRIDE TWO DEPARTURE (NHU2.NHU)

NORFOLK, VIRGINIA  
NORFOLK NS HELIPORT (KNHU)

GND CON  
298.95  
CHAMBERS TOWER  
124.3 379.15  
NAVY NORFOLK HEL TOWER  
126.375 290.5



[USN]

COPPER PRIDE TWO DEPARTURE (NHU2.NHU)

NORFOLK NS HELIPORT (KNHU)  
NORFOLK, VIRGINIA

## COPTER PRIDE TWO DEPARTURE (NHU2.NHU)

NORFOLK NS HELIPORT (KNHU)  
NORFOLK, VIRGINIA

[USN]

## DEPARTURE ROUTE DESCRIPTION

**TAKEOFF HELIPORT WESTBOUND:** Climb heading 341° then climbing left turn to JEFFR, minimum climb rate 500 ft./NM to 500, thence...

**TAKEOFF HELIPORT EASTBOUND:** Climb heading 341° then climbing right turn to DOTTS, minimum climb rate 500 ft./NM to 500, thence...

... via RADAR vectors to assigned transition. Maintain 2000 or assigned altitude. Expect clearance to requested altitude/flight level 10 minutes after departure.

**ATLJC TRANSITION (NHU2.ATLJC):** Via vectors to ATLJC.

**CAPE CHARLES TRANSITION (NHU2.CCV):** Via vectors to CCV VORTAC. (NOTE: For altitudes 5000 and below).

**ELIZABETH CITY TRANSITION (NHU2.ECG):** Via vectors to SWOPE, then via ORF VORTAC R-201 to VISOW (ORF R-201/33 DME), then direct ECG VOR/DME.

**FLAT ROCK TRANSITION (NHU2.FAK):** Via vectors to WAKS, then via ORF VORTAC R-290 to KELLE, then direct FAK VORTAC.

**HARCUM TRANSITION (NHU2.HCM):** Via vectors to HCM VORTAC.

**SALSBURY TRANSITION (NHU2.SBY):** Via vectors to SCHOL, then SBY R-200 to SBY VORTAC.

**SNOW HILL TRANSITION (NHU2.SWL):** Via vectors to SCHOL, thence SBY R-200 to V139 to SWL VORTAC.

**V139 TRANSITION (NHU2.ORB):** Via vectors to V139.

NOTE: Transitions are part of the Preferred Departure Route (PDR) system and established as an Air Traffic flow procedure from the Norfolk Terminal Area. These fixes are to be used as the initial filing point out of NS Norfolk.

## COPTER PRIDE TWO DEPARTURE (NHU2.NHU)

Amh 1 11JUL24

NORFOLK, VIRGINIA  
NORFOLK NS HELIPORT (KNHU)