

NORFOLK, VIRGINIA

# COPTER TACAN 310

TACAN NGU Chan <b>86(Y)</b>	APCH CRS <b>130°</b>	Rwy ldg TDZE Arprt Elev	N/A N/A <b>10</b>
--------------------------------	-------------------------	----------------------------	-------------------------

[USN]

NORFOLK NS HELIPORT (KNHU)

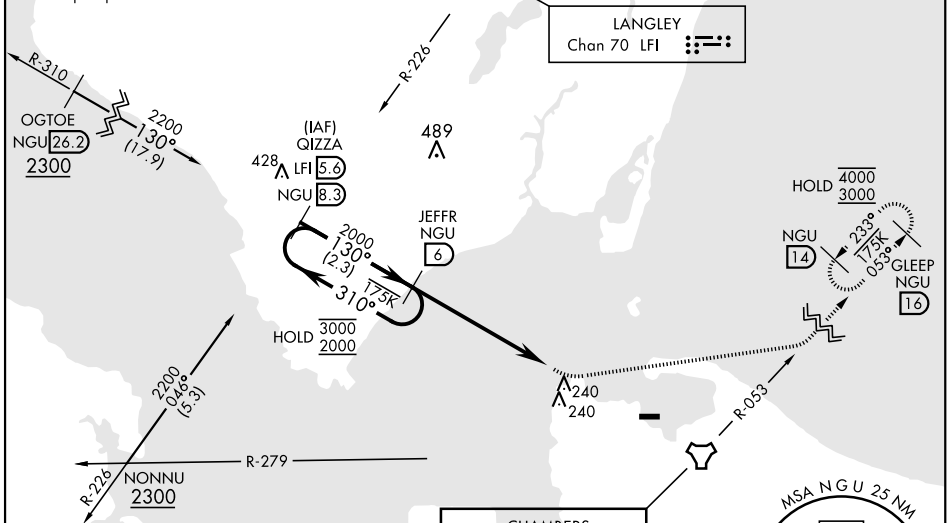
▼ Circling not authorized S of H2.
 MISSED APPROACH: Climbing left turn to 3000 to intercept NGU TACAN R-053 to GLEEP and hold.

<b>CHAMBERS TOWER</b> <b>124.3 379.15</b>	<b>NAVY NORFOLK HEL TOWER</b> <b>126.375 290.5</b>	<b>GND CON</b> <b>298.95</b>
--	---	---------------------------------

Limit all segments to 90 KIAS.

Increase to 90 KIAS (or greater) upon reaching the missed approach altitude. Maintain 90 KIAS (or greater) while in holding.

Proceed east visually from MAP, or conduct the specified missed approach. Remain north of the pier peninsula.



NE-3, 28 NOV 2024 to 26 DEC 2024

NE-3, 28 NOV 2024 to 26 DEC 2024

ELEV 10

MIRL all rwys

**EMERG SAFE ALT 100 NM 4100**

3000

NGU R-053

GLEEP NGU 16

One Minute Holding Pattern

JEFFR NGU 6

LEWDD NGU 3.2

TACAN

2.8 NM

CATEGORY	COPTER	
<input checked="" type="checkbox"/> CIRCLING	540-1 $\frac{7}{8}$	(600-1 $\frac{7}{8}$ )

NORFOLK, VIRGINIA

36° 57'N - 76° 18'W

NORFOLK NS HELIPORT (KNHU)

Orig 30NOV23

# COPTER TACAN 310