

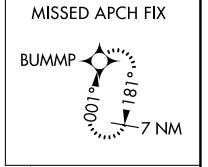
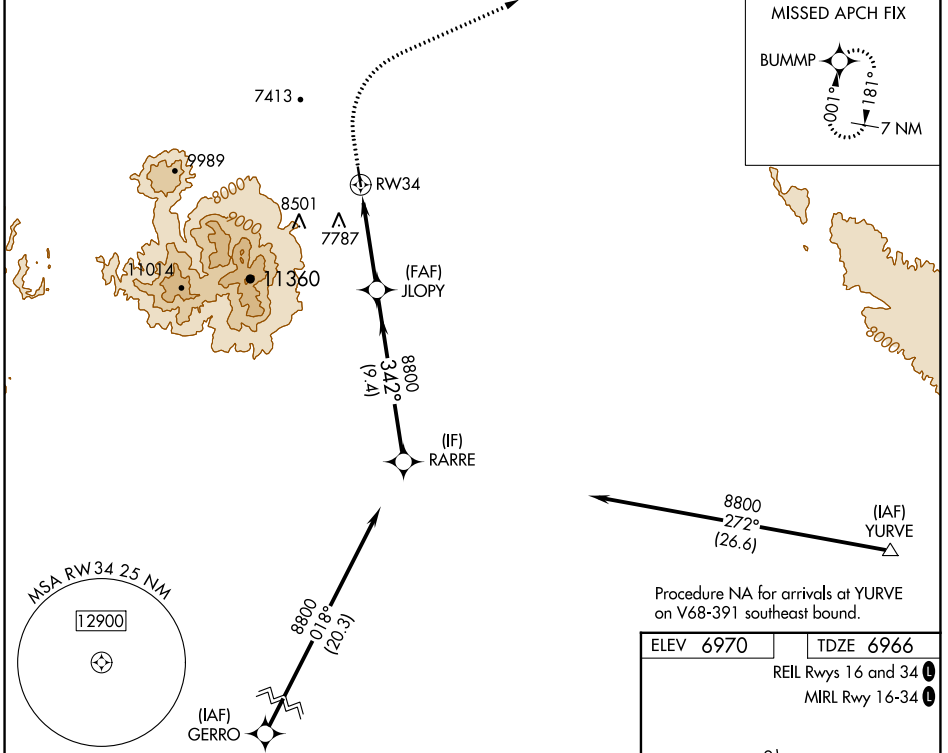
WAAS CH <b>45546</b> <b>W34A</b>	APP CRS <b>342°</b>	Rwy Idg TDZE Apt Elev	<b>5998</b> <b>6966</b> <b>6970</b>
--	------------------------	-----------------------------	---

# RNAV (GPS) RWY 34

MONTICELLO (U64)

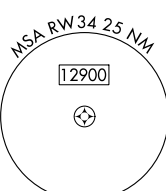
RNP APCH - GPS. ▼ For uncompensated Baro-VNAV systems, LNAV/VNAV NA below -28°C or above 54°C.	MISSED APPROACH: Climb to 7600 then climbing right turn to 9700 direct BUMMP and hold.
---	--

AWOS-3PT <b>121.025</b>	DENVER CENTER <b>127.55 256.875</b>	UNICOM <b>122.8 (CTAF) 0</b>
----------------------------	--	---------------------------------



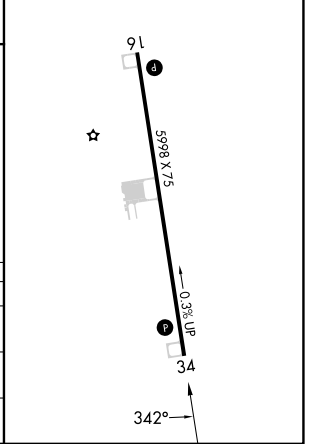
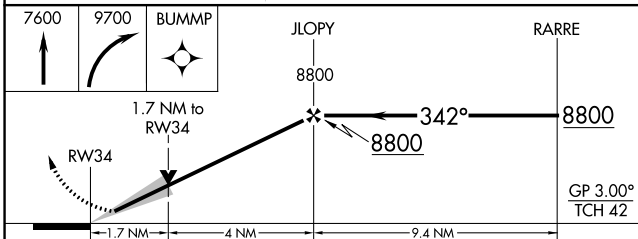
SW-4, 28 NOV 2024 to 26 DEC 2024

SW-4, 28 NOV 2024 to 26 DEC 2024



Procedure NA for arrivals at YURVE on V68-391 southeast bound.

ELEV 6970	TDZE 6966
REIL Rwys 16 and 34	
MIRL Rwy 16-34	



CATEGORY	A	B	C	D
LPV DA	7166-1	200 (200-1)		NA
LNAV/VNAV DA	7580-1¾	614 (700-1¾)		NA
LNAV MDA	7540-1	574 (600-1)		NA