

WAAS CH 65648 W19A	APP CRS 188°	Rwy Idg 6100 TDZE 5049 Apt Elev 5065
--	------------------------	---

RNAV (GPS) RWY 19

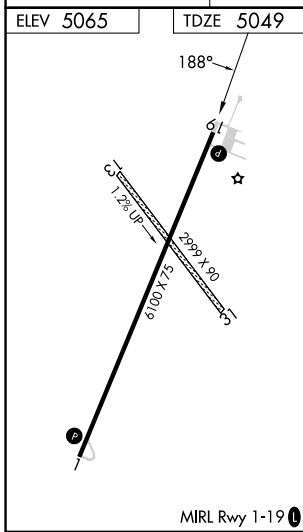
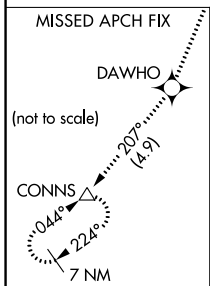
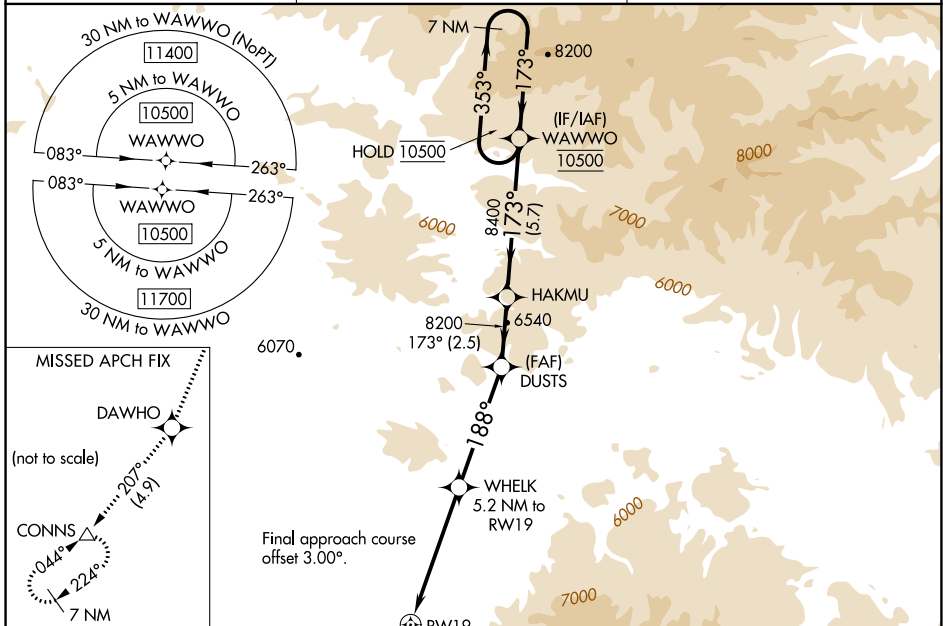
WHITE SULPHUR SPRINGS (7S6)

RNP APCH - GPS.

⚠ For uncompensated Baro-VNAV systems, LNAV/VNAV NA below -25°C or above 54°C. Rwy 19 helicopter visibility reduction below ¾ SM NA. Circling NA for Cats C and D east of Rwy 1-19. Circling NA for all Cats east of Rwy 1-19 at night.

MISSED APPROACH: Climb to 5700 then climb to 10000 direct DAWHO and on track 207° to CONNS and hold, continue climb-in-hold to 10000.

AWOS-3PT 118.525	SALT LAKE CENTER 133.4 285.4	CTAF 122.9
----------------------------	--	----------------------



ELEV 5065	TDZE 5049	5700		10000	DAWHO	tr 207°	CONNS	WAWWO	
		↑		↑	✧		△	7 NM Holding Pattern	
		WHELK		DUSTS	HAKMU		353° → 10500		
		5.2 NM to RWY 19		8200	8400		← 173°		
		2.5 NM to RWY 19		6740	8200		GP 3.00° TCH 35		
		2.5 NM	2.7 NM	4.6 NM	2.5 NM	5.7 NM			
CATEGORY	A		B		C		D		
LPV DA			5415-1		366 (400-1)				
LNAV/VNAV DA			5495-1 3/8		446 (500-1 3/8)				
LNAV MDA	5880-1 831 (900-1)		5880-1 1/4 831 (900-1 1/4)		5880-2 1/2 831 (900-2 1/2)				
CIRCLING	5880-1 1/4 815 (900-1 1/4)		5920-1 1/4 855 (900-1 1/4)		5920-2 1/2 855 (900-2 1/2)		5920-2 3/4 855 (900-2 3/4)		

NW-1, 28 NOV 2024 to 26 DEC 2024

NW-1, 28 NOV 2024 to 26 DEC 2024