

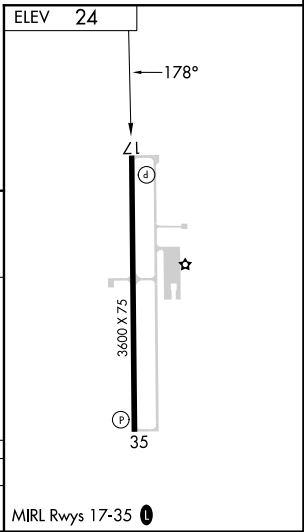
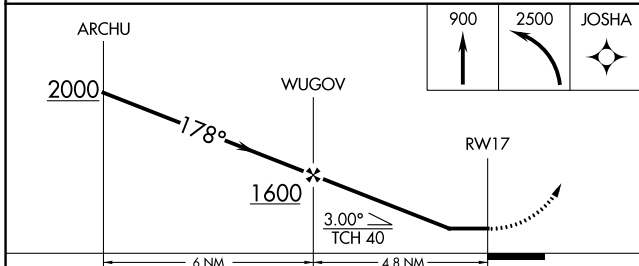
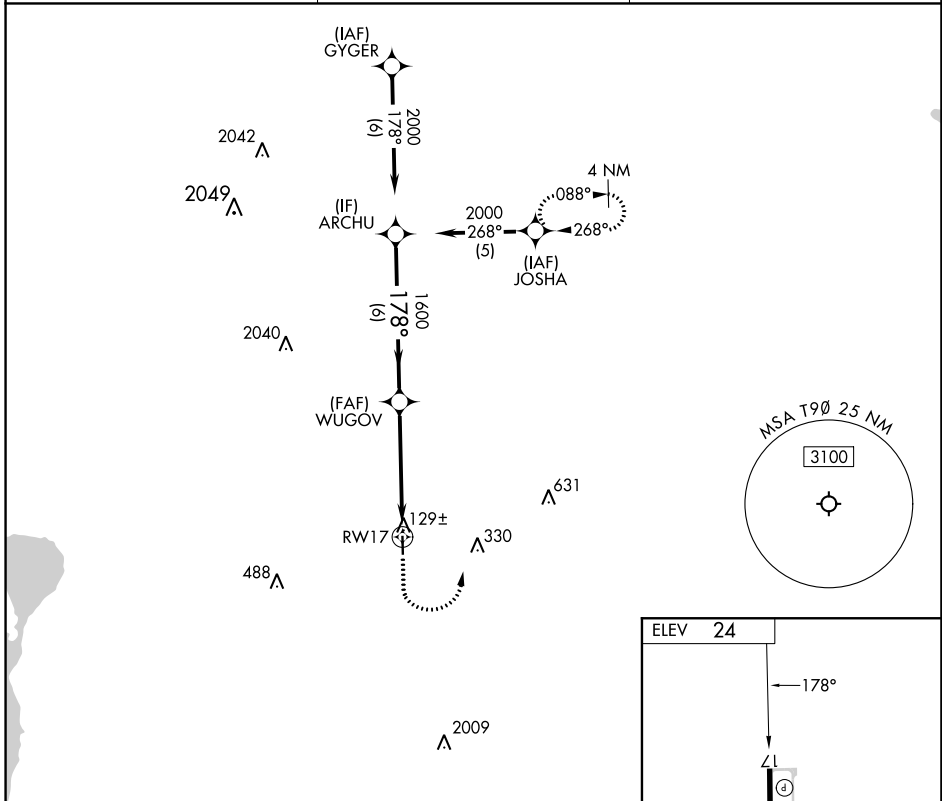
APP CRS	Rwy Idg	NA
178°	TDZE	NA
	Apt Elev	24

RNAV (GPS)-A

CHAMBERS COUNTY/WINNIE STOWELL (T9Ø)

RNP APCH - GPS.	<p>Procedure NA at night. Rwy 17 and 35 helicopter visibility reduction below 1 SM NA. Use Beaumont altimeter setting; when not received, use Liberty altimeter setting and increase all MDAs 20 feet.</p>	<p>MISSED APPROACH: Climb to 900 then climbing left turn to 2500 direct JOSHUA and hold.</p>
-----------------	--	--

BMT AWOS-3PT 118.425	HOUSTON APP CON 121.3 377.1	CTAF 122.9 Ø
--------------------------------	---------------------------------------	------------------------



CATEGORY	A	B	C	D
CIRCLING	480-1	456 (500-1)	NA	

RNAV (GPS)-A

SC-5, 28 NOV 2024 to 26 DEC 2024

SC-5, 28 NOV 2024 to 26 DEC 2024

MIRL Rwy 17-35 Ø