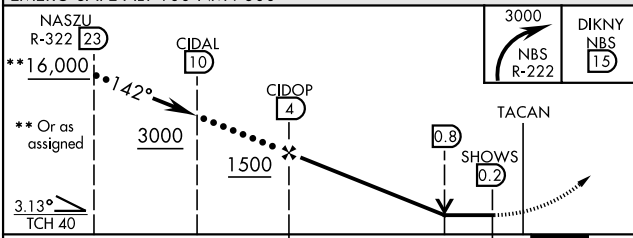
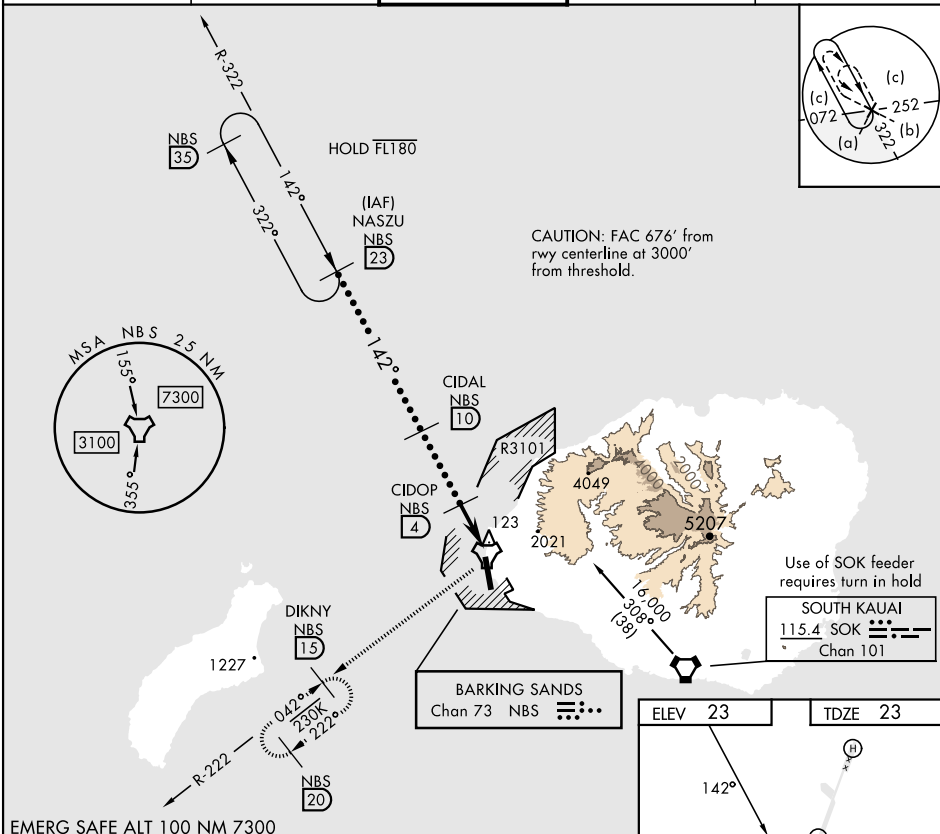


HI-TACAN RWY 16

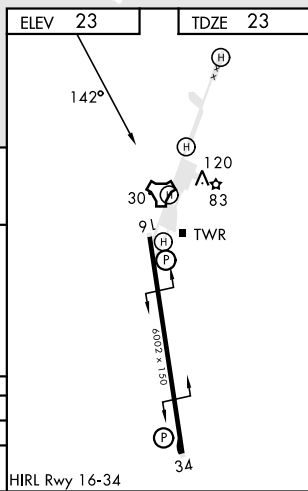
TACAN NBS Chan 73	APCH CRS 142°	Rwy Idg 6002 TDZE 23 Arpt Elev 23	AL-767 [USN]	BARKING SANDS PMRF (PHBK)
--------------------------	----------------------	--	--------------	---------------------------

*Circling not authorized E of Rwy 16-34. MISSED APPROACH: Climbing right turn to 3000 via NBS TACAN R-222 to DIKNY and hold.

ATIS★ 128.0	HCF APP 126.5 269.4	TOWER★ 126.2 360.2	GND CON★ 124.2 340.2	UNICOM 122.8
--------------------	----------------------------	---------------------------	-----------------------------	---------------------



CATEGORY	C	D	E
S-16	440-1½	417	(500-1½)
CIRCLING*	480-1½ 457 (500-1½)	580-2	557 (600-2)



HI-TACAN RWY 16

PAC, 31 OCT 2024 to 26 DEC 2024

PAC, 31 OCT 2024 to 26 DEC 2024