

KEKAHA, KAUAI I, HAWAII

# RNAV (GPS) RWY 16

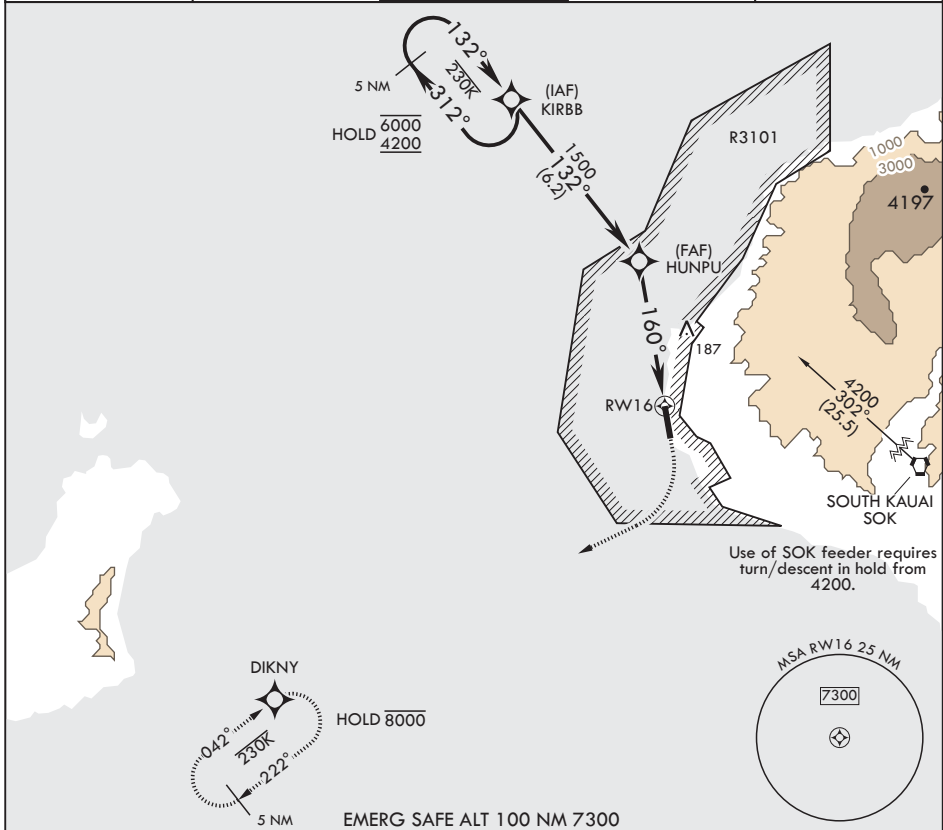
APCH CRS	Rwy Idg	6002
160°	TDZE	23
	Arpt Elev	23

AL-767 (USN)

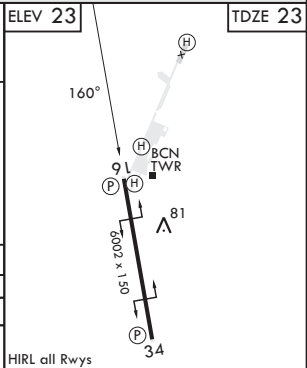
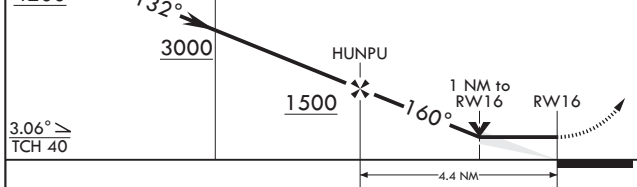
BARKING SANDS PMRF (PHBK)

RNP APCH	MISSED APPROACH: Climb to 550 then climbing right turn to 3000 direct DIKNY and hold.
<p>▼ * Circling not authorized E of Rwy 16-34.</p>	

ATIS*	HCF CENTER	TOWER*	GND CON*	UNICOM
128.0	126.5 269.4	126.2 360.2	124.2 340.2	122.8



6000	← 312°	KIRBB	550	3000	DIKNY	ELEV 23	TDZE 23
4200	← 132°						



CATEGORY	A	B	C	D
LNAV MDA	380-1	357	(400-1)	
Ⓢ CIRCLING*	380-1 357 (400-1)	480-1 457 (500-1)	480-1½ 457 (500-1½)	580-2 557 (600-2)

HIRL all Rwys

KEKAHA, KAUAI I, HAWAII

22°01'N - 159°47'W

BARKING SANDS PMRF (PHBK)

Amdt 5 14JUL22

# RNAV (GPS) RWY 16

PAC, 31 OCT 2024 to 26 DEC 2024

PAC, 31 OCT 2024 to 26 DEC 2024