

TACAN Y RWY 34

TACAN NBS Chan 73	APCH CRS 345°	Rwy Idg TDZE Arprt Elev	6002 21 23
-----------------------------	-------------------------	-------------------------------	---------------------------------------

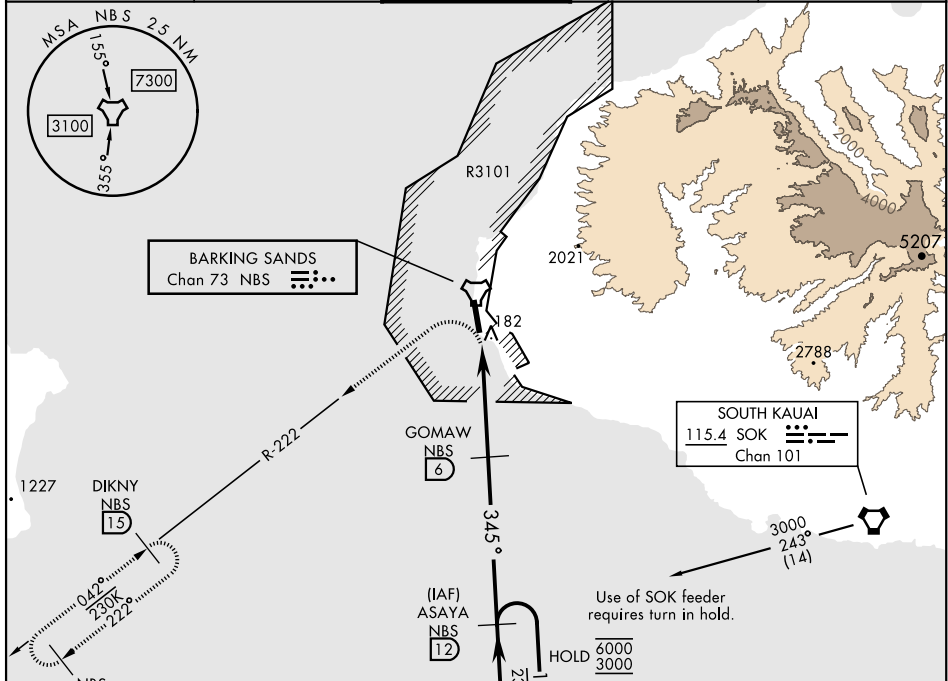
AL-767 [USN]

BARKING SANDS PMRF (PHBK)

*Circling not authorized E of Rwy 16-34.

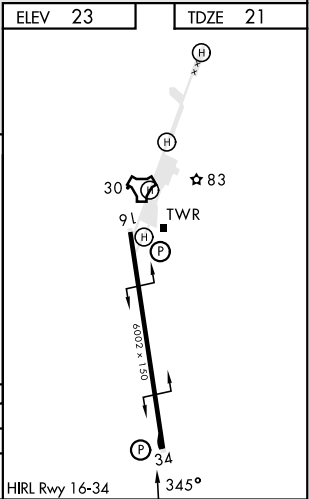
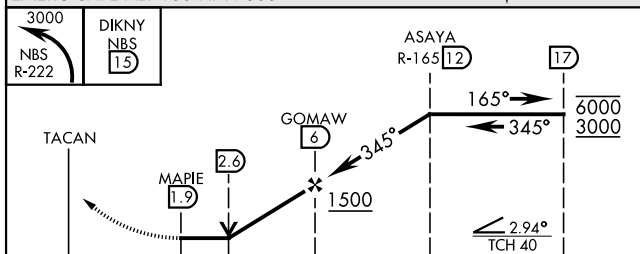
MISSED APPROACH: Climbing left turn to 3000 on NBS TACAN R-222 to DIKNY and hold.

ATIS★ 128.0	HCF APP 126.5 269.4	TOWER★ 126.2 360.2	GND CON★ 124.2 340.2	UNICOM 122.8
-----------------------	-------------------------------	------------------------------	--------------------------------	------------------------



ELEV 23	TDZE 21
---------	---------

EMERG SAFE ALT 100 NM 7300



CATEGORY	A	B	C	D
S-34	440-1 419 (500-1)	480-1	440-1 1/8 419 (500-1 1/8)	580-2
CIRCLING*	440-1 417 (500-1)	480-1 457 (500-1)	480-1 1/2 457 (500-1 1/2)	580-2 557 (600-2)

TACAN Y RWY 34

PAC, 31 OCT 2024 to 26 DEC 2024

PAC, 31 OCT 2024 to 26 DEC 2024