

# COPTER TACAN RWY 22

TACAN NGF Chan <b>93</b>	APCH CRS <b>192°</b>	Rwy Idg TDZE <b>7771</b> Arprt Elev <b>23</b>
--------------------------	----------------------	--

[USN]

KANEHOE BAY MCAS (PHNG)

RADAR required	
▼ * Circling not authorized SE of Rwy 04-22. Visibility reduction not authorized.	
ATIS <b>284.5</b>	APP/DEP CON <b>125.0 263.5</b>

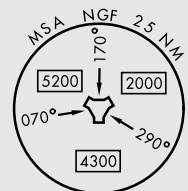
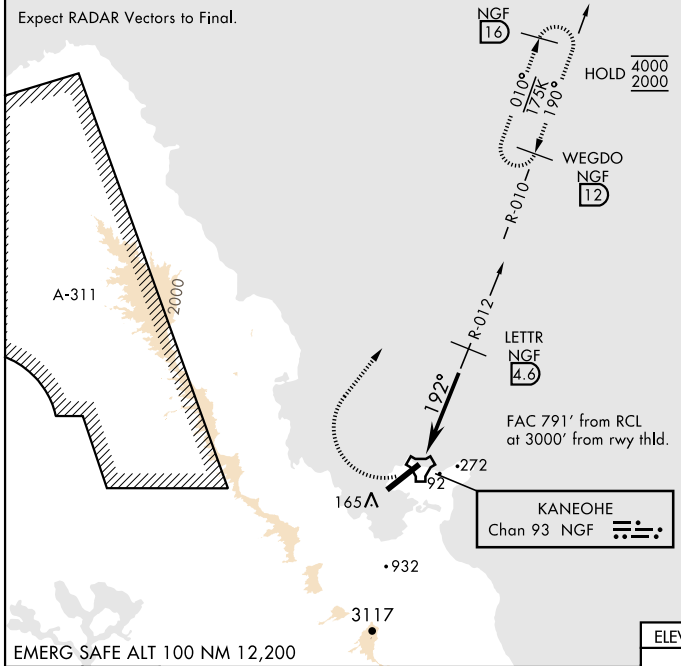
TOWER <b>120.7</b> (CTAF) <b>360.2</b>	GND CON <b>382.8</b>	CLNC DEL <b>294.7</b>	ASR/PAR
--	----------------------	-----------------------	---------

MISSED APPROACH: Climbing right turn to 2000, intercept NGF TACAN R-010 and proceed direct WEGDO and hold.

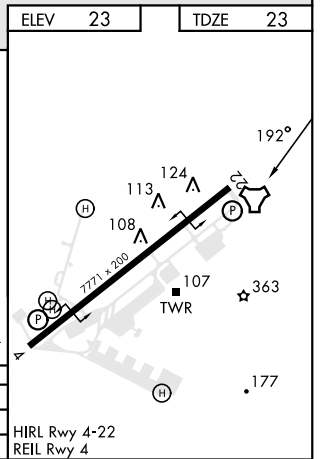
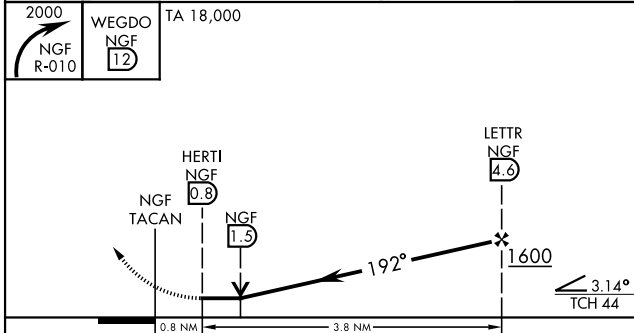
CAUTION: Mountainous terrain E, S, and W of airfield.

Max procedure airspeed 90 KIAS.

Expect RADAR Vectors to Final.



EMERG SAFE ALT 100 NM 12,200



CATEGORY	COPTER		
H-22	540-1	517	(600-1)
<b>CIRCLING*</b>	540-1	517	(600-1)

HIRL Rwy 4-22  
REIL Rwy 4

# COPTER TACAN RWY 22

PAC, 31 OCT 2024 to 26 DEC 2024

PAC, 31 OCT 2024 to 26 DEC 2024