

24305

[USN]

KANEOHE BAY MCAS (PHNG)

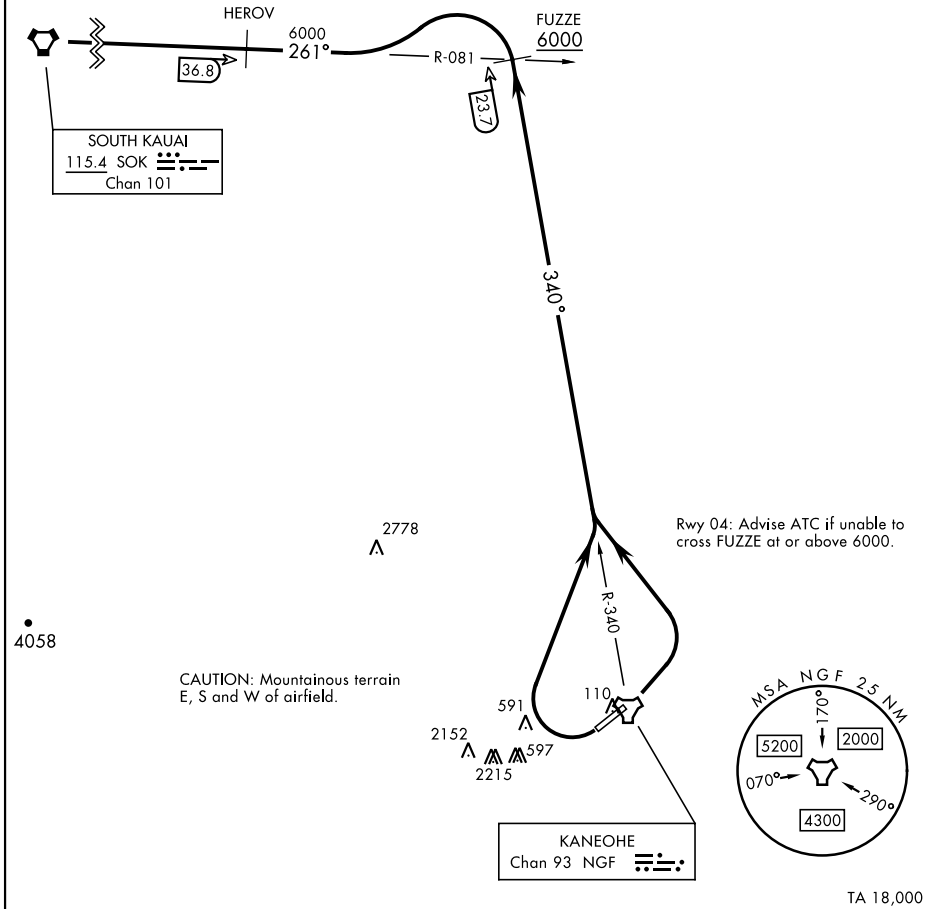
KANEOHE SIX DEPARTURE (OBSTACLE) (NGF6•SOK)

MOKAPU POINT, OAHU I, HAWAII

ATIS 284.5
 CLNC DEL
 294.7
 GND CON
 382.8
 KANEOHE TOWER
 120.7 (CTAF) 360.2
 KANEOHE APP/DEP CON
 125.0 263.5

Rwy	Knots	60	120	180	240	300	360
04†	V/V(fpm)	250	500	750	1000	1250	1500
22*	V/V(fpm)	975	1950	2925	3900	4875	5850

† ATC Climb Rate to 6000
 * Minimum Climb Rate to 3900



Rwy 04: Advise ATC if unable to cross FUZZE at or above 6000.

TA 18,000

DEPARTURE ROUTE DESCRIPTION

TAKEOFF RWY 4: Turn left to intercept NGF TACAN R-340 to FUZZE, then intercept SOK VORTAC R-081 to SOK. Cross FUZZE at or above 6000.

TAKEOFF RWY 22: Turn right as soon as practicable to intercept NGF TACAN R-340 to FUZZE, then intercept SOK VORTAC R-081 to SOK.

KANEOHE SIX DEPARTURE (OBSTACLE) (NGF6•SOK)

Orig 31OCT24

MOKAPU POINT, OAHU I, HAWAII

KANEOHE BAY MCAS (PHNG)

PAC, 31 OCT 2024 to 26 DEC 2024

PAC, 31 OCT 2024 to 26 DEC 2024