

# RNAV (GPS) Z RWY 22

[USN]

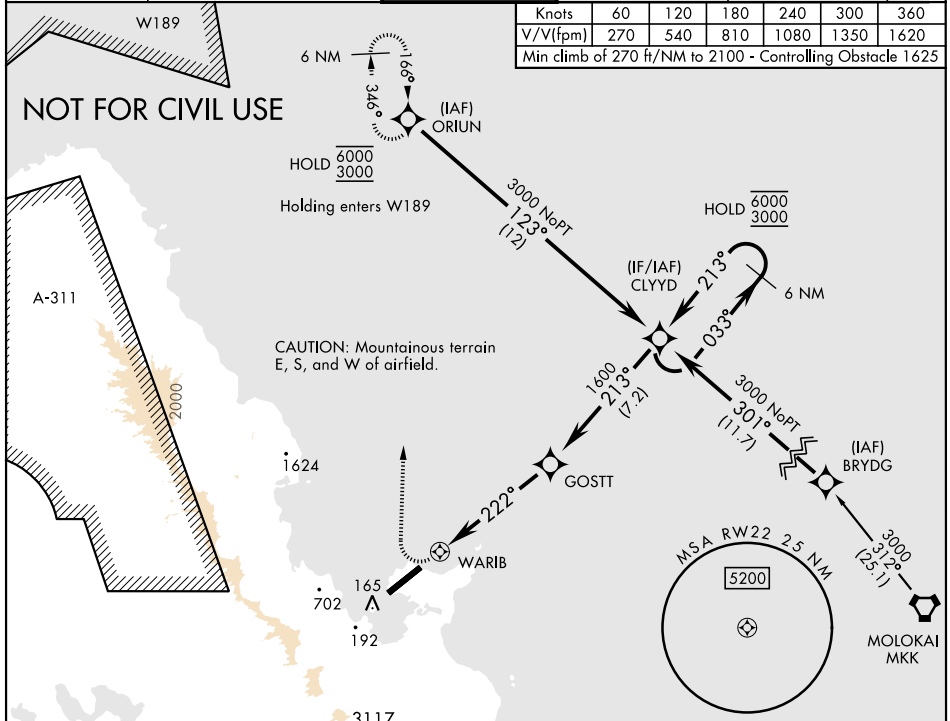
KANEHOE BAY MCAS (PHNG)

APCH CRS	Rwy Idg	7771
222°	TDZE	23
	Arpt Elev	23

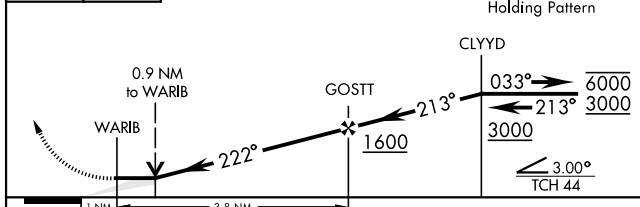
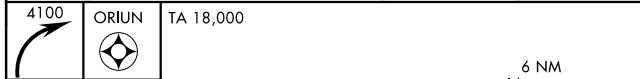
RNP APCH  
 ▼ \*Circling not authorized SE of Rwy 4-22.

MISSED APPROACH: Climbing right turn to 4100 direct ORIUN and hold.

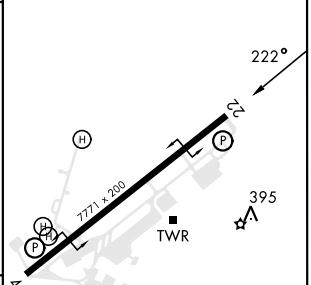
ATIS <b>284.5</b>	APP/DEP CON <b>125.0 263.5</b>	TOWER <b>120.7(CTAF) 360.2</b>	GND CON <b>382.8</b>	CLNC DEL <b>294.7</b>	ASR/ PAR
----------------------	-----------------------------------	-----------------------------------	-------------------------	--------------------------	-------------



EMERG SAFE ALTITUDE 100 NM 12,200



ELEV 23	TDZE 23
---------	---------



CATEGORY	A	B	C	D
LNVA MDA	660-1¼ 637 (700-1¼)	660-1¾ 637 (700-1¾)	NOT AUTHORIZED	
CIRCLING*	660-1¼ 637 (700-1¼)	960-2¾ 937 (1000-2¾)	NOT AUTHORIZED	

HIRL Rwy 4-22  
 REIL Rwy 4

# RNAV (GPS) Z RWY 22

PAC, 31 OCT 2024 to 26 DEC 2024

PAC, 31 OCT 2024 to 26 DEC 2024