

# HI-ILS or LOC X RWY 16

LOC I-TYY <b>109.9</b>	APCH CRS <b>164°</b>	Rwy Idg <b>13,500</b> TDZE <b>1790</b> Arprt Elev <b>1790</b>	AL-2 [USAF]	DYESS AFB (KDYS)
---------------------------	-------------------------	---	-------------	------------------

RADAR or DME required.

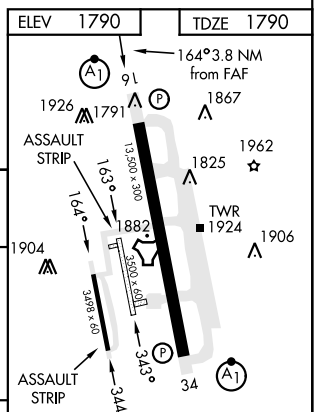
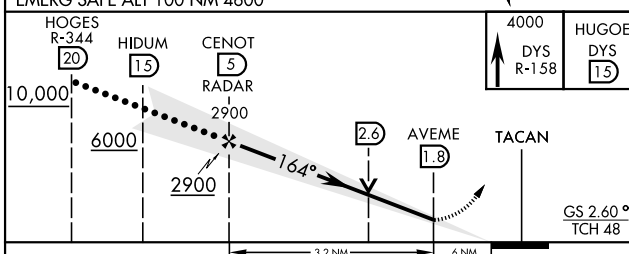
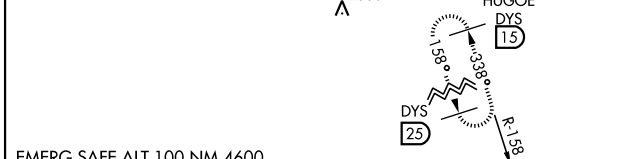
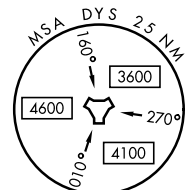
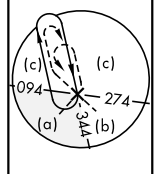
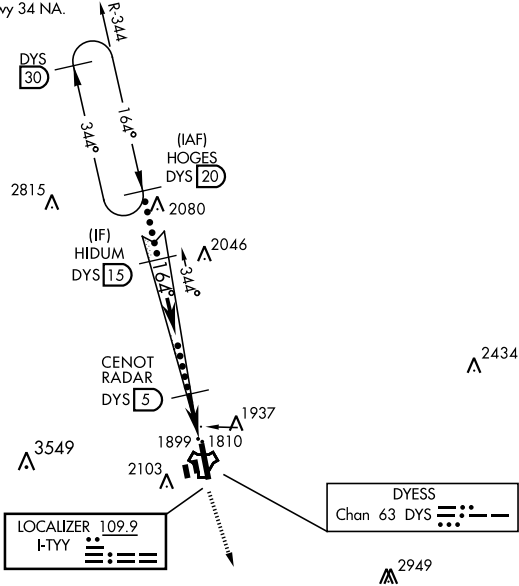
- \* When ALS inop, increase CAT CDE RVR to 40 and vis to ¾ mile.
- \*\* When ALS inop, increase CAT CDE RVR vis to 1 ¼ miles.



MISSED APPROACH: Climb to 4000 via DYS TACAN R-158 to HUGOE and hold.

ATIS ★ <b>269.175</b>	ABILENE APP CON <b>125.0 338.3 EAST</b> <b>127.2 282.3 WEST</b>	TOWER <b>133.0 257.675</b>	GND CON <b>118.35 275.8</b>	ASR
--------------------------	---	-------------------------------	--------------------------------	-----

\*\*\* Circling to other than Rwy 34 NA.



CATEGORY	C	D	E
S-ILS 16 *	1990/24	200	(200-½)
S-LOC 16 **	2220/40	430	(500-¾)
*** CIRCLING	2460-1¾ 670 (700-1¾)	2460-2 670 (700-2)	2460-2¼ 670 (700-2¼)
LIRL Rwy 164°-344° HIRL Rwy 16-34 FAF to MAP 3.2 NM			
Knots	120	140	160 180 200
Min:Sec	1:36	1:22	1:12 1:04 0:58

# HI-ILS or LOC X RWY 16

SC-2, 26 DEC 2024 to 23 JAN 2025

SC-2, 26 DEC 2024 to 23 JAN 2025