

# HI-ILS or LOC X RWY 34

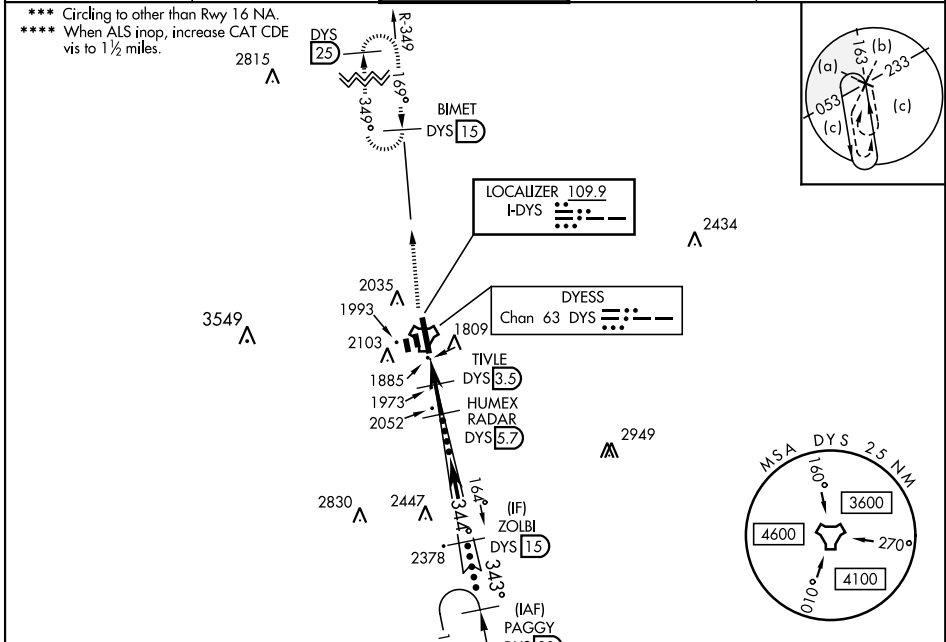
LOC I-DYS <b>109.9</b>	APCH CRS <b>344°</b>	Rwy ldg <b>13,500</b> TDZE <b>1788</b> Arprt Elev <b>1790</b>
---------------------------	-------------------------	---

AL-2 [USAF]

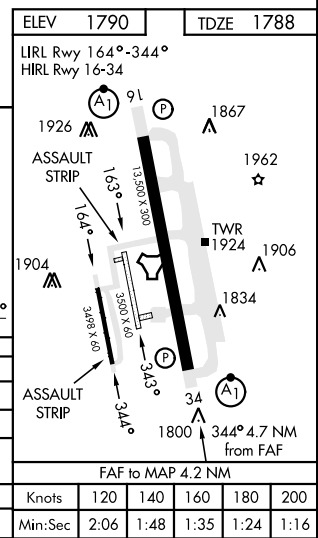
DYESS AFB (KDYS)

RADAR or DME required.	ALSIF-1 	MISSED APPROACH: Climb to 4000 via DYS TACAN R-349 to BIMET and hold.
* When ALS inop, increase CAT CDE RVR to 40 and vis to 3/4 mile.		
** When ALS inop, increase CAT CDE vis to 1 3/8 miles.		

ATIS ★ <b>269.175</b>	ABILENE APP CON <b>125.0 338.3 EAST</b> <b>127.2 282.3 WEST</b>	TOWER <b>133.0 257.675</b>	GND CON <b>118.35 275.8</b>	ASR
--------------------------	---	-------------------------------	--------------------------------	-----



CATEGORY	C	D	E
S-ILS 34 *	1988/24	200 (200-1/2)	
S-LOC 34 **	2240/45	452 (500-7/8)	
CIRCLING ***	2460-1 3/4 670 (700-1 3/4)	2460-2 670 (700-2)	2460-2 1/4 670 (700-2 1/4)
WITHOUT LAST STEPDOWN FIX			
S-LOC 34 ****	2320/55	532 (600-1)	



# HI-ILS or LOC X RWY 34

SC-2, 26 DEC 2024 to 23 JAN 2025

SC-2, 26 DEC 2024 to 23 JAN 2025