

# HI-TACAN X RWY 34

TACAN Chan <b>63</b>	APCH CRS <b>338°</b>	Rwy ldg <b>13,500</b> TDZE <b>1788</b> Arprt Elev <b>1790</b>
-------------------------	-------------------------	---

JAL-2 [USAF]

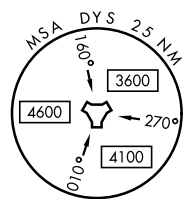
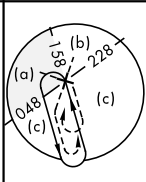
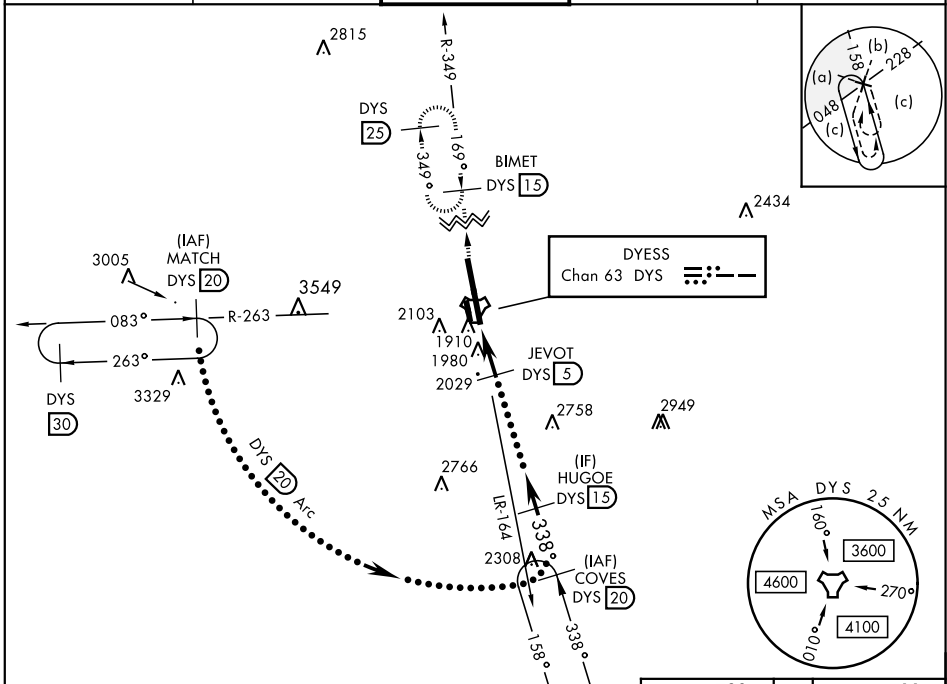
DYESS AFB (KDYS)

\* When ALS inop, increase CAT CDE vis to 1 3/8 miles.  
 \*\* Circling to other than Rwy 16 NA.



MISSED APPROACH: Climb to 4000 via  
 DYS TACAN R-349 to BIMET and hold.

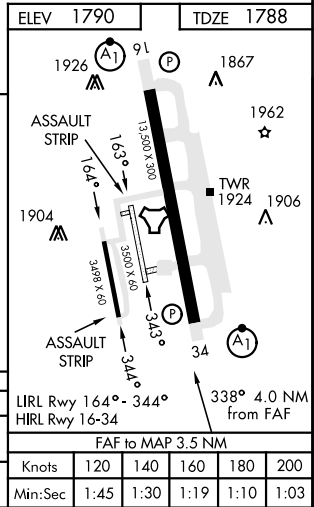
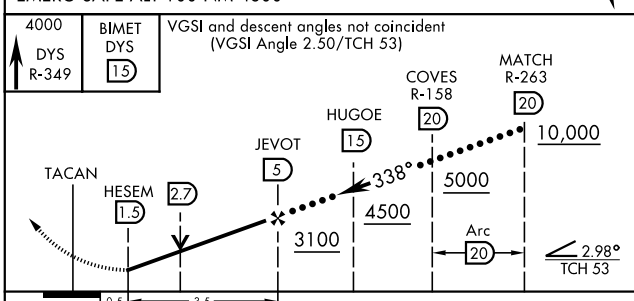
ATIS ★ <b>269.175</b>	ABILENE APP CON <b>125.0 338.3</b> EAST <b>127.2 282.3</b> WEST	DYESS TOWER <b>133.0 257.675</b>	GND CON <b>118.35 275.8</b>	ASR
--------------------------	---	-------------------------------------	--------------------------------	-----



SC-2, 26 DEC 2024 to 23 JAN 2025

SC-2, 26 DEC 2024 to 23 JAN 2025

EMERG SAFE ALT 100 NM 4600



CATEGORY	C	D	E
S-34 *	2280/50	492	(500-1)
CIRCLING **	2460-1 3/4 670 (700-1 3/4)	2460-2 670 (700-2)	2460-2 1/4 670 (700-2 1/4)

# HI-TACAN X RWY 34