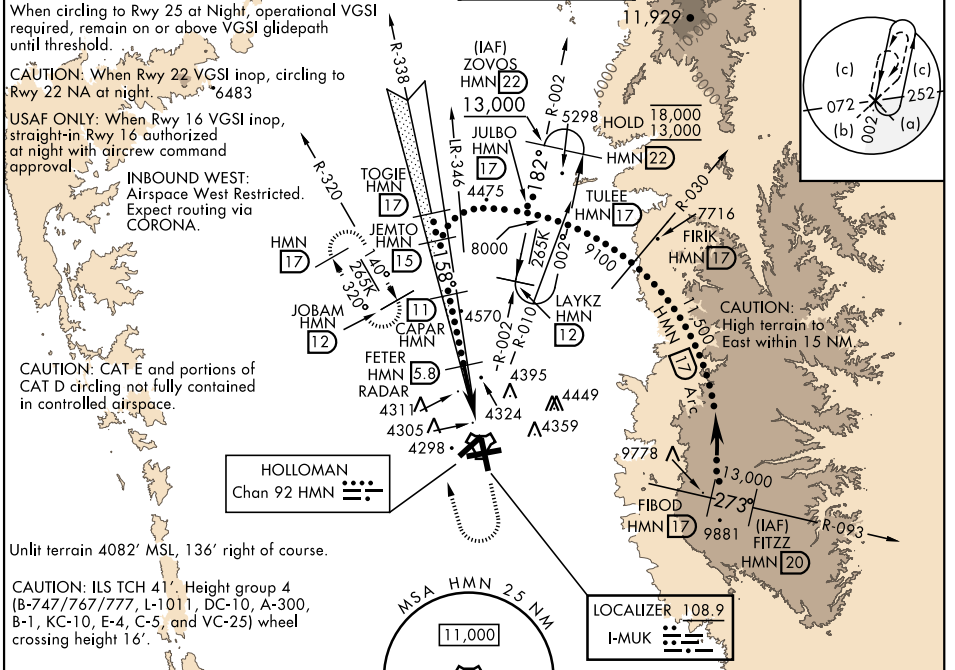
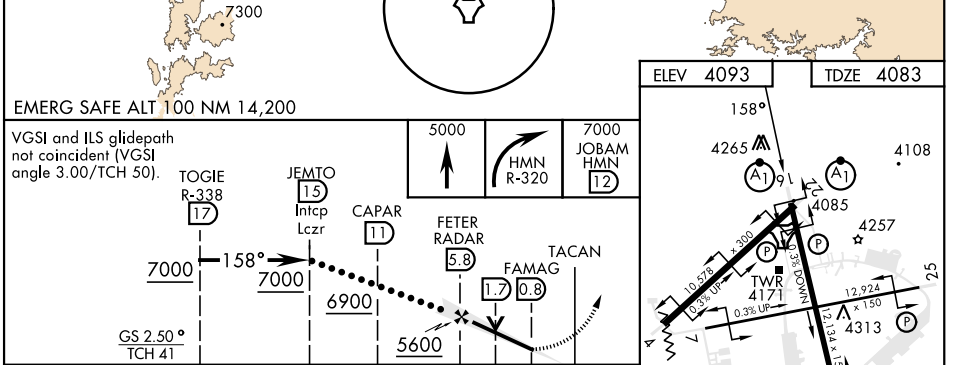


LOC I-MUK 108.9	APCH CRS 158°	Rwy Ldg 12,134 TDZE 4083 Arprt Elev 4093	AL-7 [USAF]	HOLLOMAN AFB (KHMN)	
RADAR or DME required. ▼ *When ALS inop, increase CAT CDE vis to ¾ mile. **When ALS inop, increase CAT CDE vis to 1½ miles.			ALS-F-1 	MISSED APPROACH: Climb straight ahead to 7000, passing 5000 turn right and intercept HMN R-320 outbound to JOBAM and hold.	
ATIS * 273.5	ALBUQUERQUE CENTER 132.65 257.6	APP CON 120.6 269.225	TOWER * 119.3 254.4	GND CON 127.05 275.8	CLNC DEL 126.7 289.4



SW-1, 26 DEC 2024 to 23 JAN 2025

SW-1, 26 DEC 2024 to 23 JAN 2025



EMERG SAFE ALT 100 NM 14,200	VGSI and ILS glidespath not coincident (VGSI angle 3.00/TCH 50).		
	C	D	E
	S-ILS 16 *	4283-½	200 (200-½)
	S-LOC 16**	4600-1	517 (600-1)
CIRCLING	4680-1½ 587 (600-1½)	4740-2 647 (700-2)	4780-2½ 687 (700-2½)

