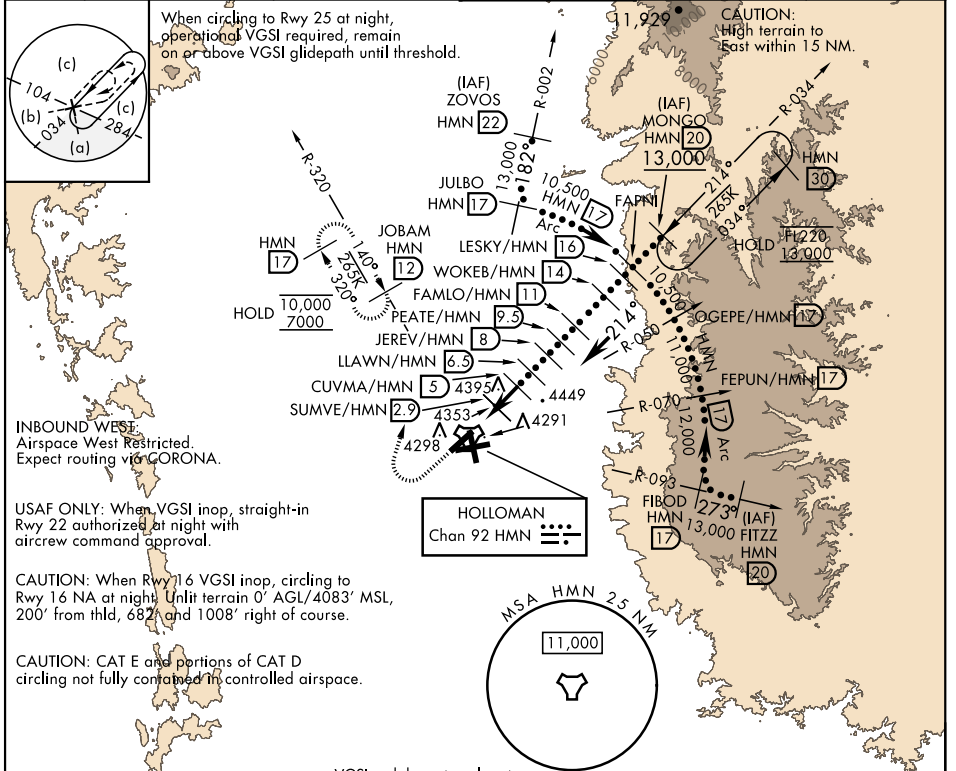


# HI-TACAN RWY 22

TACAN HMN Chan <b>92</b>	APCH CRS <b>214°</b>	Rwy ldg <b>10,578</b> TDZE <b>4083</b> Arpt Elev <b>4093</b>	AL-7 [USAF]	HOLLOMAN AFB (KHMN)	
▼ *When ALS inop, increase CAT CDE vis to 1½ miles. When VGSI inop, procedure NA at night.			ALSF-1 	MISSED APPROACH: Climb straight ahead to 7000, passing 5000 turn right and intercept HMN TACAN R-320 outbound to JOBAM and hold.	
ATIS ★ <b>273.5</b>	ALBUQUERQUE CENTER <b>132.65 257.6</b>	APP CON <b>120.6 269.225</b>	TOWER ★ <b>119.3 254.4</b>	GND CON <b>127.05 275.8</b>	CLNC DEL <b>126.7 289.4</b>



SW-1, 26 DEC 2024 to 23 JAN 2025

SW-1, 26 DEC 2024 to 23 JAN 2025

EMERG SAFE ALT 100 NM 14,200	VGSI and descent angle not coincident, VGSI angle 2.50°/TCH 53.	ELEV 4093	TDZE 4083
5000 7000 ↑ HMN R-320 JOBAM	† CUVMA to MAP TACAN CUTNU 0.8 SUMVE 2.9 † CUVMA 6.3 LLAWN 6.3 JEREV 8 PEATE 9.5 FAMLO 11 WOKEB 14 WUSBO 15 LESKY 16 FAPNI 17 10,500 214° 8300 9100 9800 3.30° TCH 53		
CATEGORY	C	D	E
S-22 *	4620-1	537 (600-1)	
CIRCLING	4680-1½ 587 (600-1½)	4720-2 647 (700-2)	4780-2½ 687 (700-2½)
HIRL all rwys REIL Rwy 22			

# HI-TACAN RWY 22