

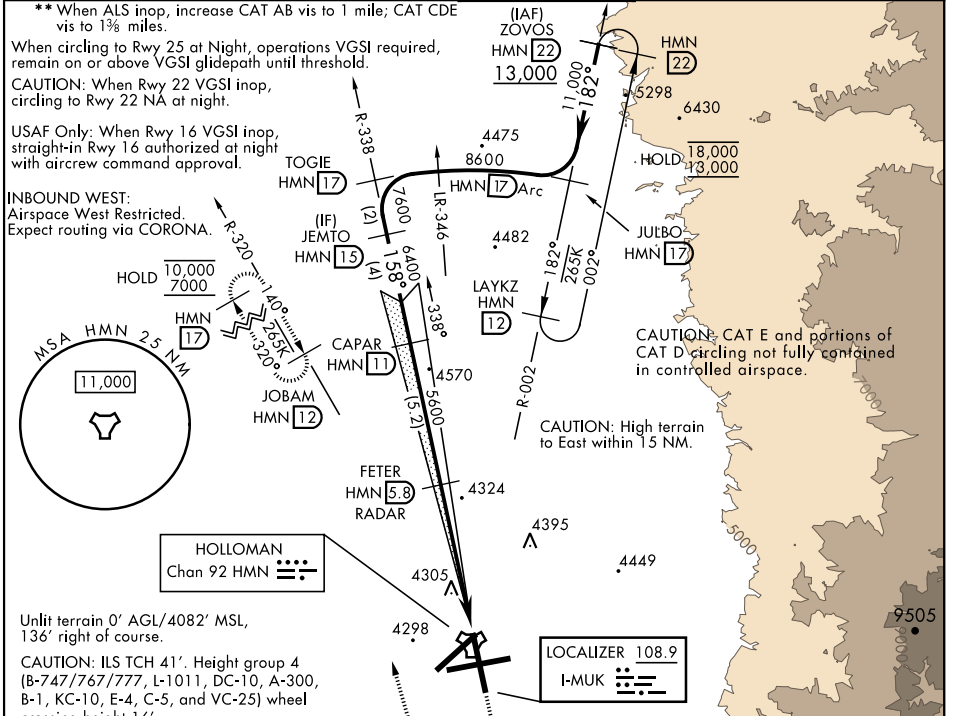
ALAMOGORDO, NEW MEXICO

# ILS or LOC X RWY 16

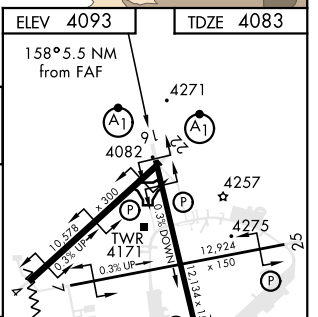
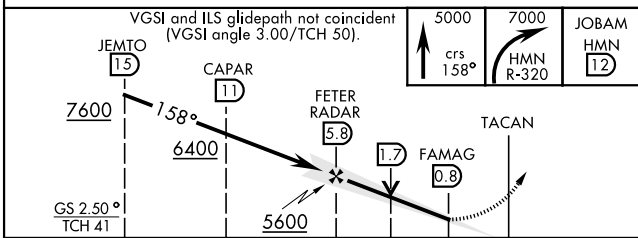
LOC I-MUK <b>108.9</b>	APCH CRS <b>158°</b>	Rwy ldg <b>12,134</b> TDZE <b>4083</b> Arpt Elev <b>4093</b>	AL-7 [USAF]	HOLLOMAN AFB (KHMM)
---------------------------	-------------------------	--	-------------	---------------------

RADAR or DME required.		ALSIF-1 	MISSED APPROACH: Climb straight ahead to 7000, passing 5000 turn right and intercept HMN R-320 outbound to JOBAM and hold.		
* When ALS inop, increase vis to 3/4 miles.					

ATIS * <b>273.5</b>	ALBUQUERQUE CENTER <b>132.65 257.6</b>	APP CON <b>120.6 269.225</b>	TOWER * <b>119.3 254.4</b>	GND CON <b>127.05 275.8</b>	CLNC DEL <b>126.7 289.4</b>
------------------------	---	---------------------------------	-------------------------------	--------------------------------	--------------------------------



EMERG SAFE ALT 100 NM 14,200	ELEV 4093	TDZE 4083
------------------------------	-----------	-----------



CATEGORY	A	B	C	D	E
S-ILS 16*	4283-1/2		200	(200-1/2)	
S-LOC 16**	4640-1/2 517 (600-1/2)		4600-1	517	(600-1)
CIRCLING	4640-1 547 (600-1)		4680-1 1/2 587 (600-1 1/2)	4740-2 647 (700-2)	4780-2 1/2 687 (700-2 1/2)
HIRL all rwys REIL Rwy 22					
FAF to MAP 5.0 NM					
Knots	60	90	120	150	180
Min:Sec	5:00	3:20	2:30	2:00	1:40

ALAMOGORDO, NEW MEXICO 32° 52'N-106° 06'W HOLLOMAN AFB (KHMM)

Amtd 4 11AUG22

# ILS or LOC X RWY 16

SW-1, 26 DEC 2024 to 23 JAN 2025

SW-1, 26 DEC 2024 to 23 JAN 2025