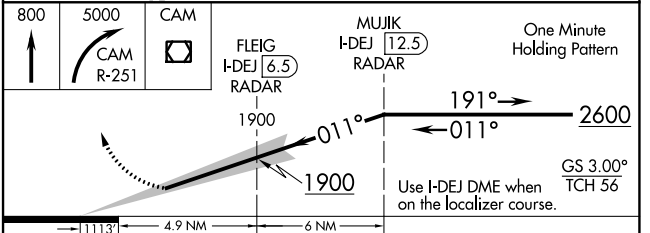
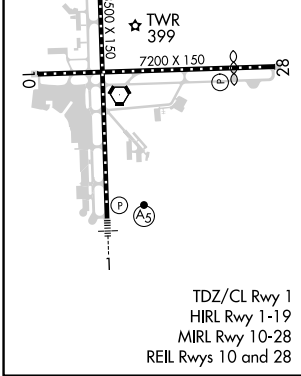
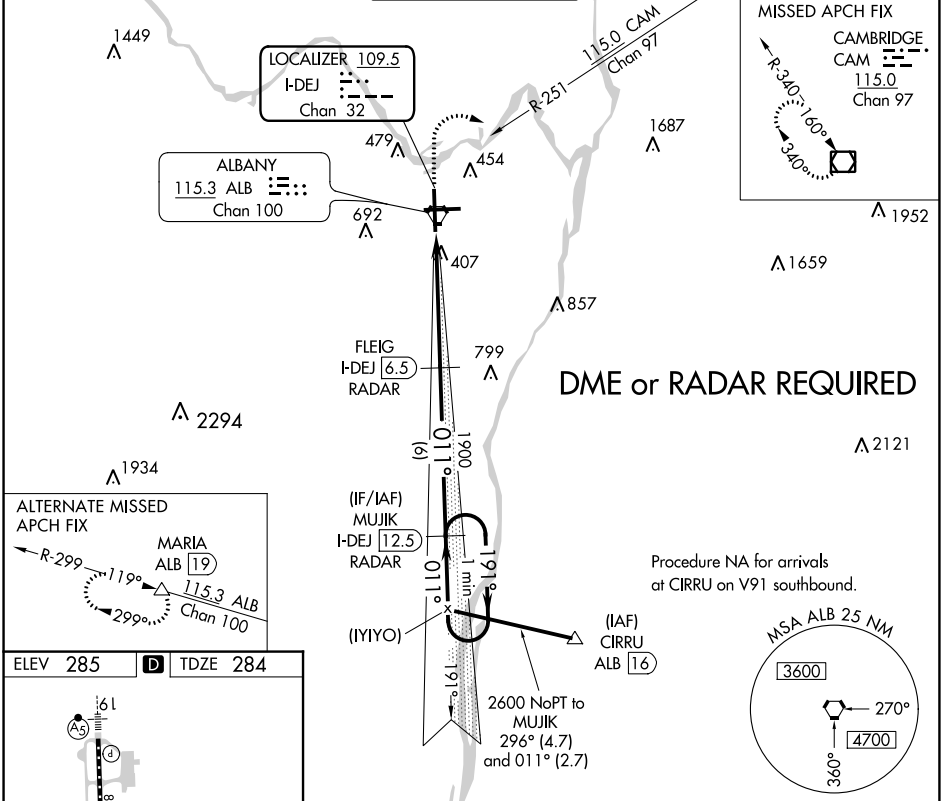


LOC/DME I-DEJ <b>109.5</b> Chan 32	APP CRS <b>011°</b>	Rwy Idg TDZE Apt Elev	<b>8500</b> <b>284</b> <b>285</b>
--	------------------------	-----------------------------	---

# ILS RWY 1 (SA CAT II)

ALBANY INTL (ALB)

<b>▼</b> DME or RADAR required. Reduced Lighting: Requires specific OPSPEC, MSPEC, or LOA approval and use of autoland or HUD to touchdown.	<b>MALSR</b> 	<b>MISSED APPROACH:</b> Climb to 800 then climbing right turn to 5000 and on CAM VOR/DME R-251 to CAM VOR/DME and hold.		
D-ATIS <b>120.45</b>	ALBANY APP CON <b>132.825 307.2</b>	ALBANY TOWER <b>119.5 257.8</b>	GND CON <b>121.7 348.6</b>	CLNC DEL <b>127.50</b>



CATEGORY	A	B	C	D
S-ILS 1	RA 100/12 100 DA 384			

**SA CATEGORY II ILS - SPECIAL AIRCREW & AIRCRAFT CERTIFICATION REQUIRED**

NE-2, 26 DEC 2024 to 23 JAN 2025

NE-2, 26 DEC 2024 to 23 JAN 2025