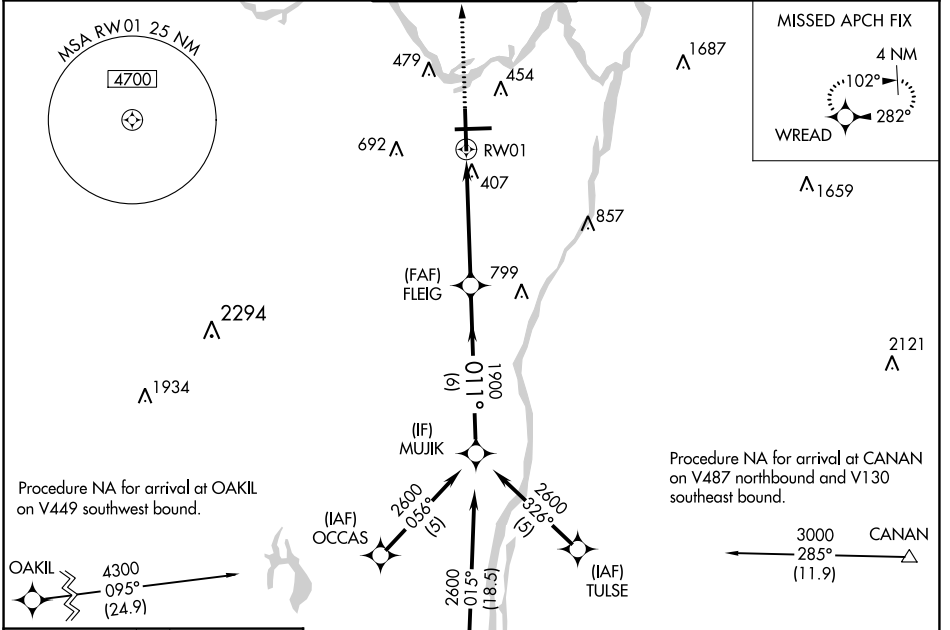


WAAS CH <b>97402</b>	APP CRS <b>011°</b>	Rwy Idg TDZE Apt Elev	<b>8500</b> <b>284</b> <b>285</b>
-------------------------	------------------------	-----------------------------	-----------------------------------------

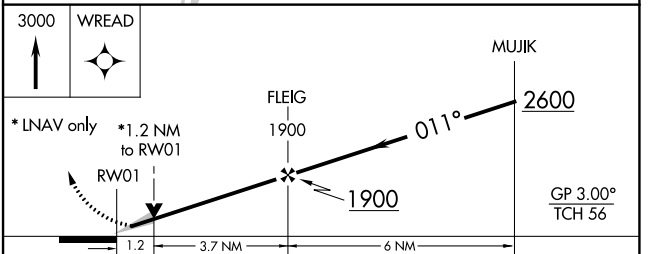
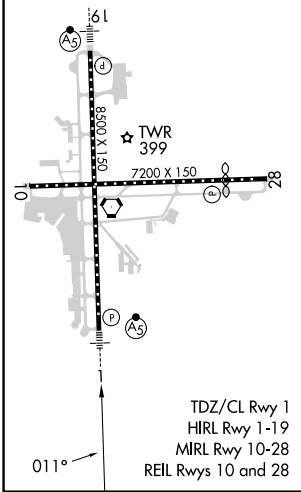
# RNAV (GPS) Y RWY 1

ALBANY INTL (ALB)

RNP APCH - GPS.		MALSR		MISSED APPROACH: Climb to 3000 direct WREAD and hold, continue climb-in-hold to 3000.	
<p>▼ For uncompensated Baro-VNAV systems, LNAV/VNAV NA below -18°C or above 42°C. Circling NA west of Rwy 1-19. Circling Rwy 10 NA at night.</p>					
D-ATIS <b>120.45</b>	ALBANY APP CON <b>132.825 307.2</b>	ALBANY TOWER <b>119.5 257.8</b>	GND CON <b>121.7 348.6</b>	CLNC DEL <b>127.50</b>	



ELEV 285	<b>D</b>	TDZE 284
----------	----------	----------



CATEGORY	A	B	C	D
LPV DA	484/18		200 (200-½)	
LNAV/VNAV DA	687/45		403 (500-⅞)	
LNAV MDA	720/24	436 (500-½)	720/40	436 (500-¾)
<b>C</b> CIRCLING	820-1	535 (600-1)	860-1½ 575 (600-1½)	960-2¼ 675 (700-2¼)

NE-2, 26 DEC 2024 to 23 JAN 2025

NE-2, 26 DEC 2024 to 23 JAN 2025